

CANALINE

Canaline Marine Diesel Engine

PARTS LIST FOR PARTS FITTED BY ENGINES PLUS LTD



Engines Plus Ltd

Tel: 01452 729707

E-mail – parts@enginesplus.co.uk

Web – www.enginesplus.co.uk

Dated 240523

Information

This manual has been produced to support the accessories fitted by Engines Plus Ltd, at its UK factory.

The parts breakdown is by sales kit number. The kits covered in this manual are as follows-

Kit Number	Description	Where used	Page No
163007	Air Cleaner Kit	CL38 / 42 / 52 /60	3
163014	Air Cleaner Kit	CL70T	4
260018	Anti-Vibration Mounts	All	5
260003	Rear Bearers	All	6
363000	Speed Control Brk Kit	All	7
463019	Manicooler - Keel cooled CL	CL38 / 42 / 52	8
463020	Manicooler - Keel cooled CL	CL60	10
463021	Manicooler - Keel cooled CL	CL70T	12
560021	Exhaust Stub Kit	CL38 / 42 / 52 /60	14
563011	Exhaust outlet 2inch BSP & jacket	CL70T	15
663010	Fuel line & filter kit	All	16
663011	Fuel line & filter kit with Electric FLP	All	17
763000	Extended Dipstick	All	19
763001	Sump pump & pipe kit	All	20
763002	Oil cooler & pipework	CL38 / 42 / 52	21
763003	Dummy oil cooler & ftgs	CL38	23
763007	Oil cooler & pipework	CL60 / CL70T	25
863004	PRM150D2 Gbox , drive plate & adaptor	All	27
863005	PRM150D3 Gbox , drive plate & adaptor	All	29
863019	PRM280D2 gearbox,drive plate & Adpt	All	30
863023	PRM125D2 Gbox , driveplate and Adpt	CL38	32
963001	75Amp Tensioner Link	CL42 / 52 / 60 / 70T	34
963005	Decals	All	35
963038	100A x 12V Altr & front bearer kit	CL38 / 42 / 52	36
963050	110A x 12V Altr & front bearer kit	CL38 / 42 / 52	38
963051	175A x 12V Altr & front bearer fit (Direct fit)	CL38 / 42 / 52 / 60	41
963057	175A x 12V Altr & front bearer kit CL70T (Direct fit)	CL70T	44
963076	Intermediate panel	All	47
963077	Deluxe panel kit	All	49
963078	Hire fleet panel kit	All	51

Kit Code: 163007

Description: Air Intake Kit – Canaline

Used on CL38, CL42, CL52 and CL60



Ref No	Part Number	Description	Quantity
1	EP110528	Air cleaner with replaceable filter	1
2	EP110508	Air cleaner / Lifting eye bracket	1
3	EP110503	Air hose – 4A marine	1
4	FTGHOSECLIP60-45	45 – 60 Hose clip	0.3
5	EP110529	Element – Air cleaner CL	1
6	EP110504	Air cleaner – Canaline disposable	1
Note	Fitted up to EP.1100092		

Kit Code: 163014

Description: Air cleaner kit – CL70T

Used on CL70T



1



2



3



4

Ref No	Part Number	Description	Quantity
1	EP110545	Air cleaner – 6" V2	1
2	EP110547	Mounting band – 6" air cleaner V2	1
Fixings	FTGM8X30HTHEX	M8 x 30 HT Hex set	2
	FTGM8PWASHER	M8 Plain washer	2
	FTGM8FLANGENUT	M8 Serrated flange nut	2
3	EP110574	Bracket, Air cleaner CL70T	1
Fixing	FTGM8X20FLANGE	M8 20 Serrated flange	2
	FTGM8X40HTHEX	M8 x 40 HT Hex set	1
	FTGM8SWASHER	M8 Spring washer	1
	FTGM8PWASHER	M8 Plain washer	1
	FTGM10NUT	M10 Nut	1
4	EP110575	Air inlet hose CL70T	1
Fixings	FTGHOSECLIP25-17	17 -25 Hose clip	0.1
	FTGHOSECLIP60-45	45 – 60 Hose clip	0.1
	FTGHOSECLIP90-70	79 – 90 Hose clip	0.1
5	EP110583	Decal	1

Kit Code: 260018

Description: Anti Vibration Mounts

Used on CL38, CL42, CL52 , CL60 and CL70T

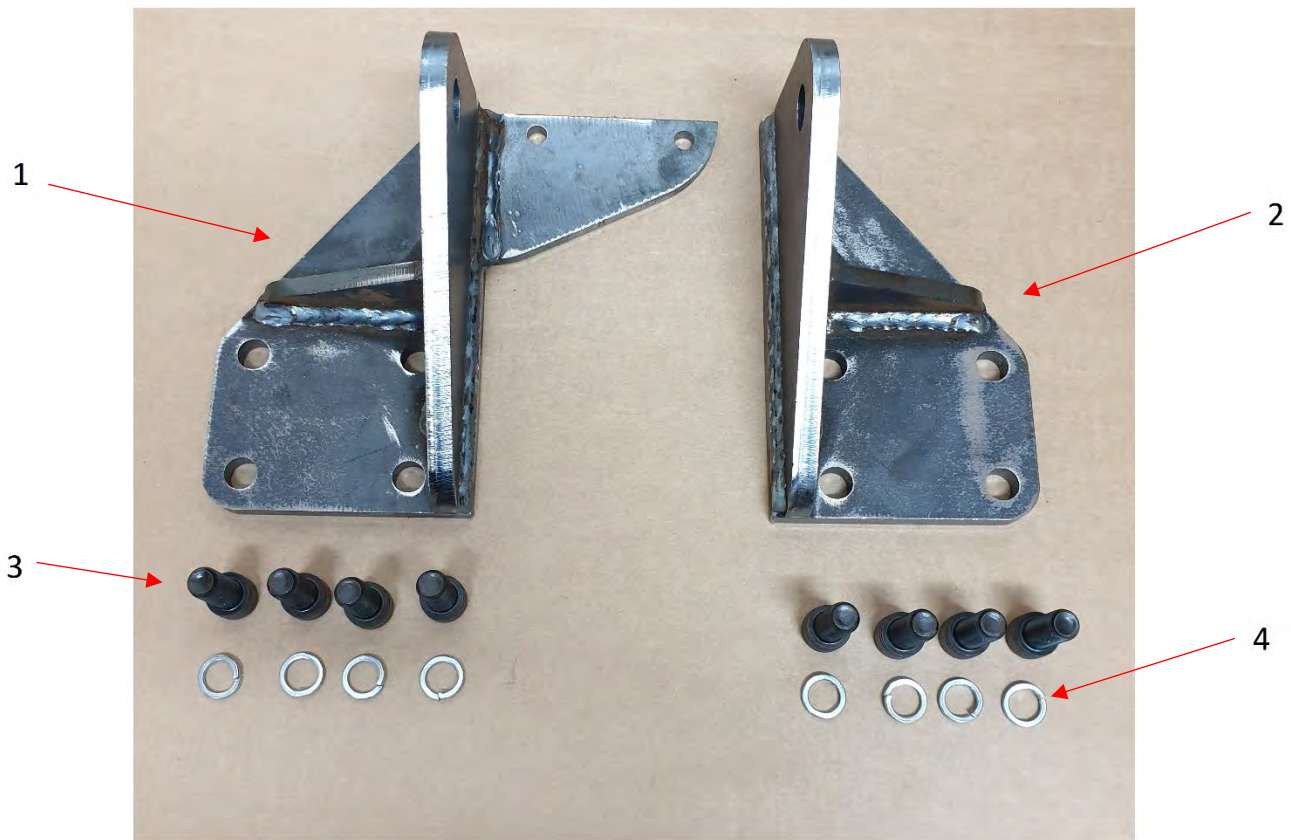


Ref No	Part Number	Description	Quantity
1	EP210038	AVM Marine – Medium/35 inc High Adjuster	4

Kit Code: 263000

Description: Rear Bearer Kit

Used on CL38, CL42, CL52, CL60 and CL70T



Ref No	Part Number	Description	Quantity
1	EP210532	Rear bearer – Right hand	1
2	EP510533	Rear bearer – Left hand	1
3	FTGM12X1.25X30C	M12 x 1.25 x 30 Cap head Screw	8
4	FTGM12SWASHERS	M12 Spring Washer	8

Kit Code: 363000



Description: Speed control bracket kit

Used on CL38, CL42, CL52, CL60 and CL70T

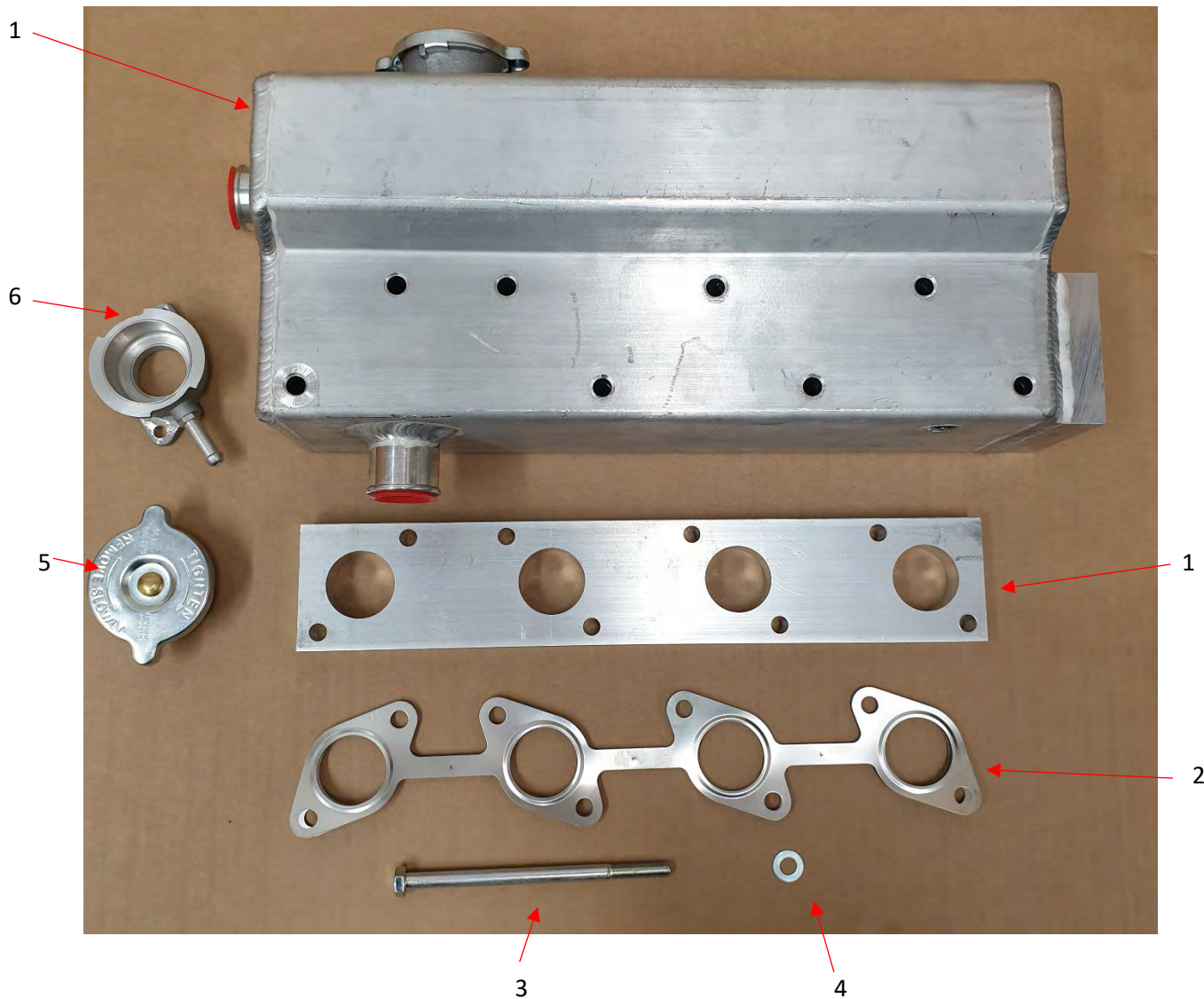


Ref No	Part Number	Description	Quantity
1	EP310502	Cable anchor bracket	1
2	EP310085	Ball joint	1
3	EP310085	Saddle clamp kit	1

Kit Code: 463019

Description: Manicooler – Keel cooled CL

Used on CL38, CL42, CL52

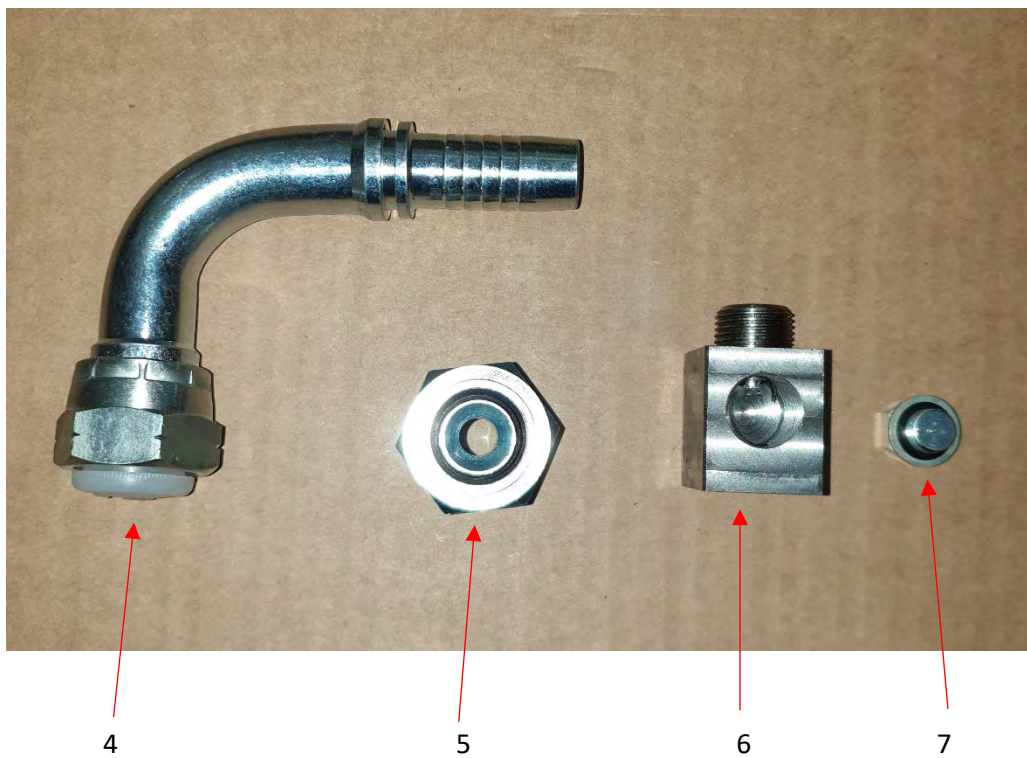


Ref No	Part Number	Description	Quantity
1	EP410505	Manicooler Assy – 4A200?4A220	1
2	KYE652012352	Joint – Exhaust manifold 4A	1
3	FTGM8X130HTHEX	M8 x130 HT hex bolt	8
4	FTGM8PWASHER	M8 plain washer	8
5	EP410181	Filler neck assy	1
6	EP410090	Cap	1
Note			

Kit Code: 463019

Description: Mani – Keel cooled CL

Used on CL38, CL42, CL52

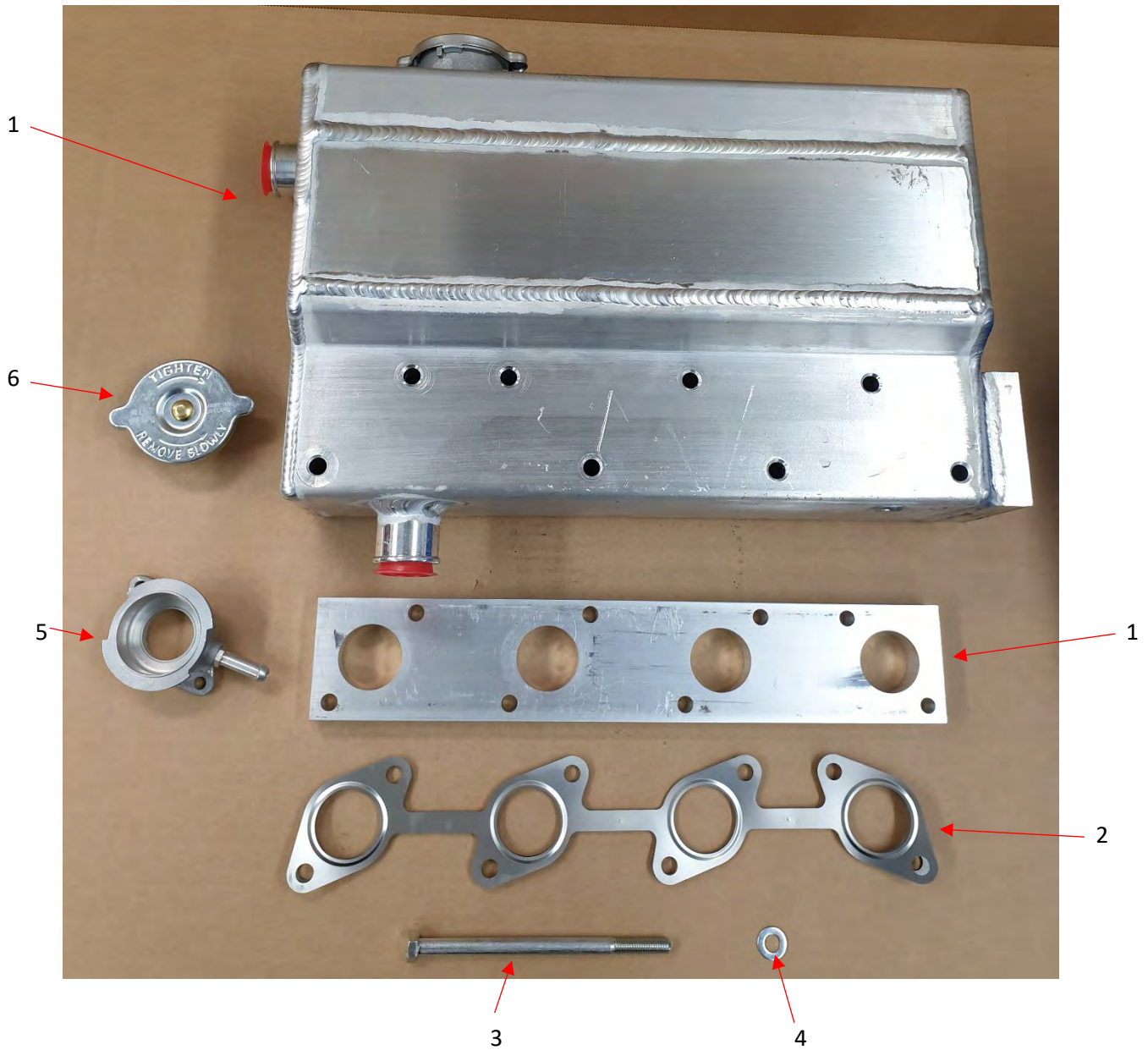


Ref No	Part Number	Description	Quantity
1	EP410511	Top hose	1
Fixings	Ftghoseclip45-35	32 – 45 Hose clips	0.2
2	EP210553	Lifting eye	1
3		Engine Blanking plug	1
4	EP410512	Calorifier connector 90 deg	1
5	EP410150	Adaptor 3/8 inch – 5/8 inch BSP	1
6	EP410509	Calorifier adaptor	1
7	EP410524	Blanking plug M10 x 1.0	1

Kit Code: 463020

Description: Manicooler – Keel cooled CL60

Used on CL60



Ref No	Part Number	Description	Quantity
1	EP410605	Manicooler kit – CL60	1
2	KYE652012352	Joint – Exhaust manifold 4A	1
3	FTGM8X130HTHEX	M8 x130 HT hex bolt	8
4	FTGM8PWASHER	M8 plain washer	8
5	EP410181	Filler neck assy	1
6	EP410090	Cap	1
Note			

Kit Code: 463020

Description: Mani – Keel cooled CL60

Used on CL60



Ref No	Part Number	Description	Quantity
1	EP410511	Top hose	1
Fixings	Ftghoseclip45-35	32 – 45 Hose clips	0.2
2	EP210553	Lifting eye	1
3	EP410512	Calorifier connector 90 deg	1
4	EP410150	Adaptor 3/8 inch – 5/8 inch BSP	1
5	EP410509	Calorifier adaptor	1
6	EP410524	Blanking plug M10 x 1.0	1
Note			

Kit Code: 463021

Description: Expansion tank – K/C CL70T

Used on CL70T



1



2



3



4



5



Ref No	Part Number	Description	Quantity
1	EP410692	Expansion tank CL70T	1
Fixings	FTGM10X25HTHEX	M10 x 25 HT Hex set	4
	FTGM10SWASHER	M10 Spring washer	4
2	EP410694	Spacer, expansion tank CL70T	1
Fixings	FTGM12X1.25X30F	M12 x 1.25 x 30 HT Hex set	4
	FTGM12SWASHER	M12 Spring washer	4
3	EP410695	Blanking cap 90 x 90 3-5mm	2
4	EP210553	Lifting eye	1
5	EP410703	Lifting eye 4L split guard & CL70T	1
Note			

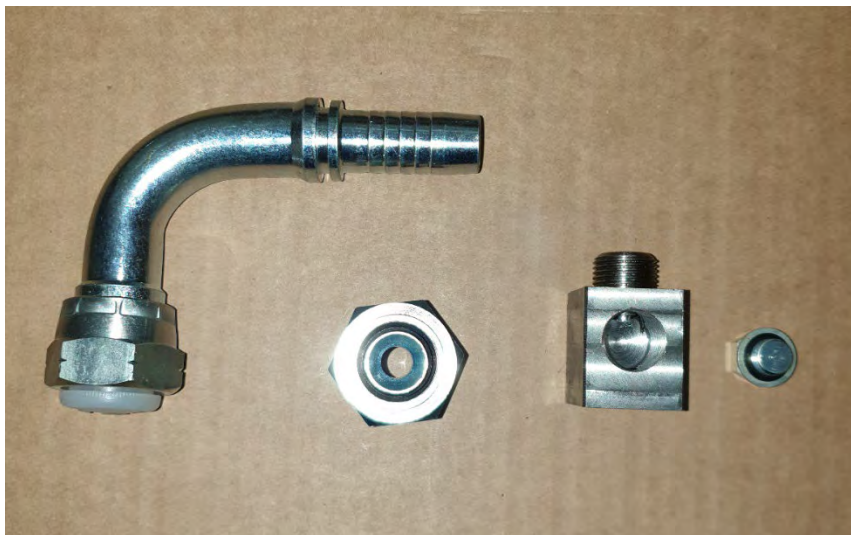
Kit Code: 463021

Description: Expansion tank – K/C CL70T

Used on CL70T



1



2

3

4

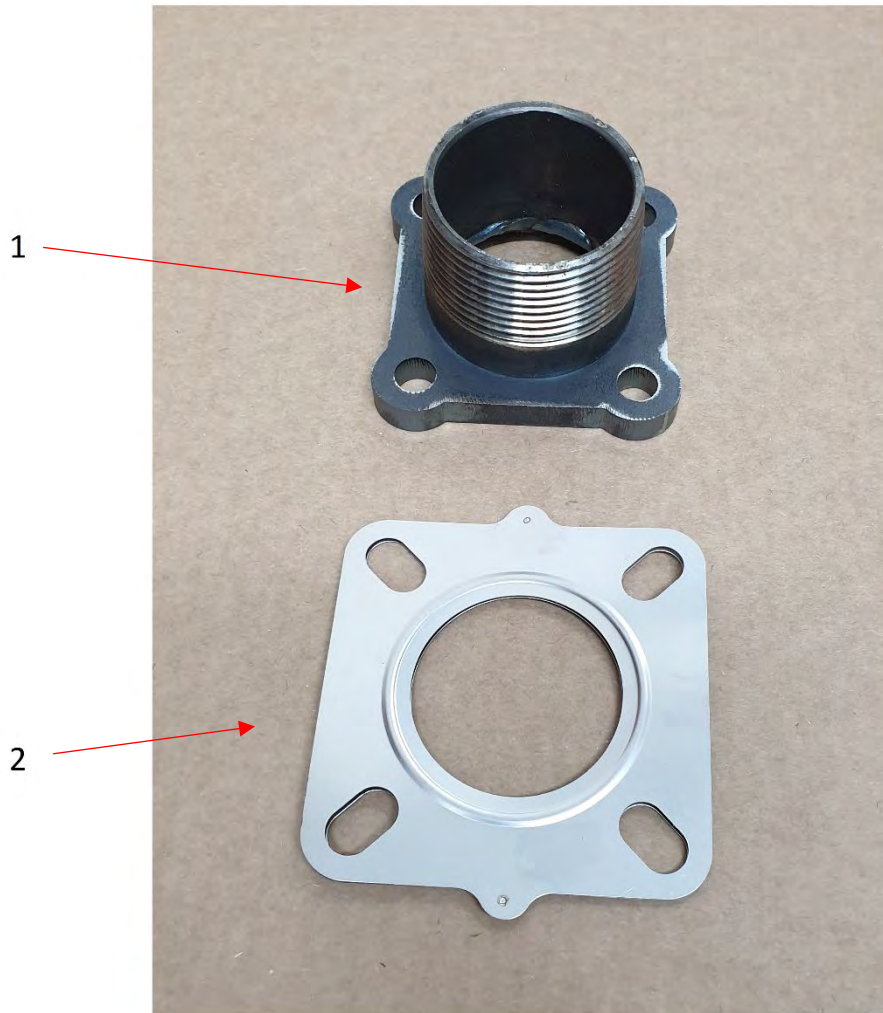
5

Ref No	Part Number	Description	Quantity
1	EP410693	Top hose CL70T	1
2	EP410512	Calorifier connector 90deg	1
3	EP410150	Adaptor 3/8- inch – 5/8-inch BSP	1
4	EP410509	Calorifier adaptor	1
5	EP410524	Blanking plug M10 x 1.0	1
N/S	EP410181	Filler neck assy	1
N/S	EP410090	Cap	1

Kit Code: 560021

Description: Exhaust stub 1 ½" BSP M

Used on CL38, CL42, CL52 and CL60



Ref No	Part Number	Description	Quantity
1	EP510012	Exhaust stub – 1.5 inch BSP	1
2	KYE580012373	Exhaust flange joint	1

Kit Code: 563011

Description: Exhaust outlet 2" BSP & jacket CL70T

Used on CL70T



1



2



3



4

Ref No	Part Number	Description	Quantity
1	EP510574	Elbow, turbo outlet 4B243T	1
2	KYR6500-12372	Gasket	1
3	EP510575	Lagging jacket CL70T Part 1	1
4	EP510575	Lagging jacket CL70T Part 2	1
5			
Note			

Kit Code: 663010

Description: Fuel line and filter kit

Used on CL38, CL42, CL52, CL60 and CL70T



1



2



3

Ref No	Part Number	Description	Quantity
1	KYT468225732	Fuel filter assy	1
2	EP610509	Fuel filter bracket 4A	1
3	EP610511	Fuel line kit 4A marine	1
Note	Break down of fuel line kit on the next page		

Kit Code: 663011

Description: Fuel line, filter kit with Electric Fuel lift pump

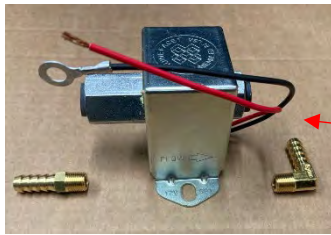
Used on CL38, CL42, CL52, CL60 and CL70T



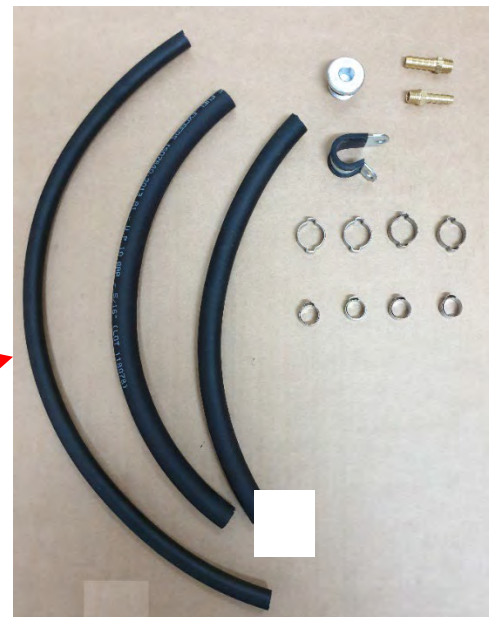
1



2



5



3



6



4

Ref No	Part Number	Description	Quantity
1	KYT468225732	Fuel filter assy	1
2	EP610509	Fuel filter bracket 4A	1
3	EP610511	Fuel line kit 4A marine	1
4	EP610510	Blanking Plate FLP	1
5	EP610512	Fuel Pump & 8 dia Stubs	1
6	EP910046	2 way T connector with blades	1
Note	Break down of fuel line kit on the next page		

Kit Code: EP610511**Description: Fuel line and filter kit****Used on CL38, CL42, CL52 and CL60****Break down of EP610511 Fuel Kit**

All flexible fuel hose to conform to ISO 7840

Parts within kit

	Length	Bore	Qty	EP Part No.
Leak off Hose	500	5	1	EP610043
Feed - Fuel Filter to Feed Pump	340	8	1	EP610045
Feed - Feed Pump to Inj Pump	300	8	1	EP610045

Supplier Part no EP Part No. Qty

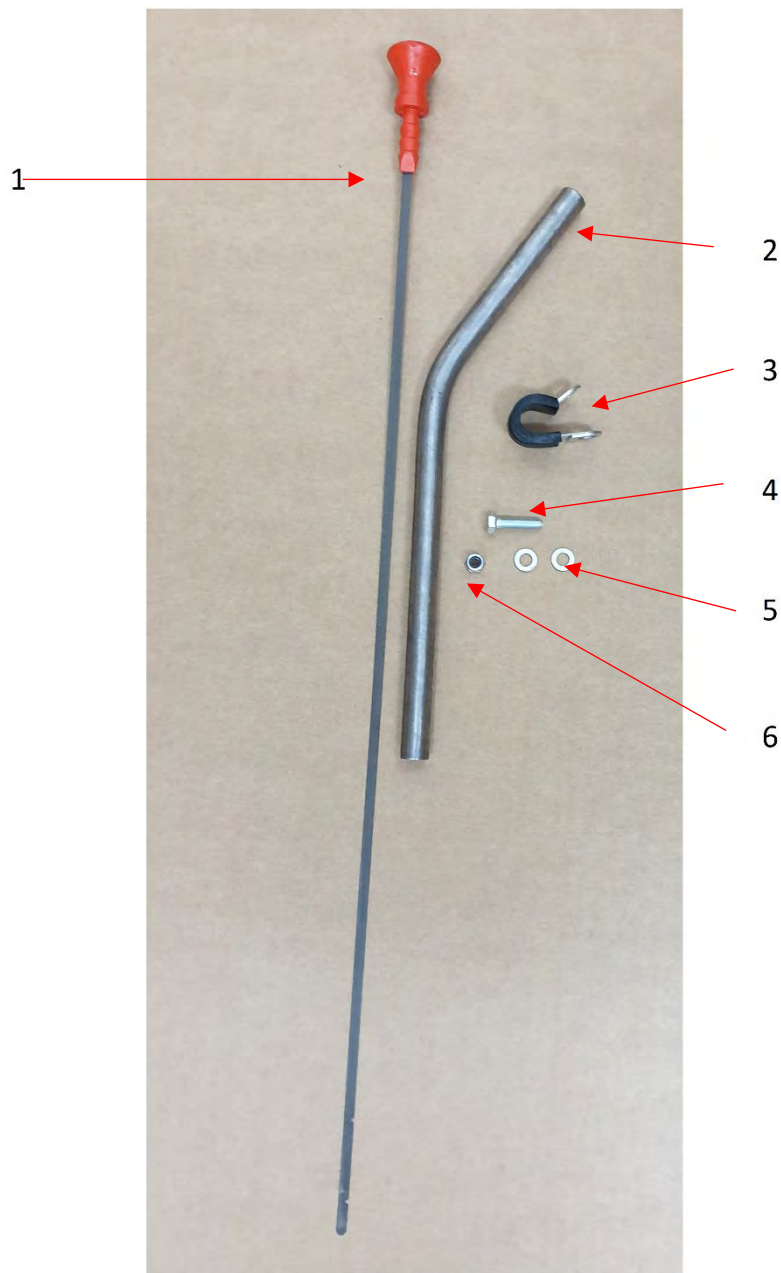
1-Ear Hose Inner ST/ST Clip	23012343	EP610545	4
Plated Steel O Clips	CO-15-18	EP610095	4
Stub Pipe 1/8" BSP~ 6 bore Hose	GT 10/06K	EP610506	1
Stub Pipe 1/8" BSP~8 bore Hose	GT 10/08K	EP610507	1
Blanking Plug & O Ring Assy *	VSM-22-WD-XP	EP610521	1
P Clip M12 with M6 fixing	RSGU1-12-15	EP710518	1

*Blanking Plug & O Ring Assy

Kit Code: 763000

Description: Extended dipstick

Used on CL38, CL42, CL52, CL60 and CL70T

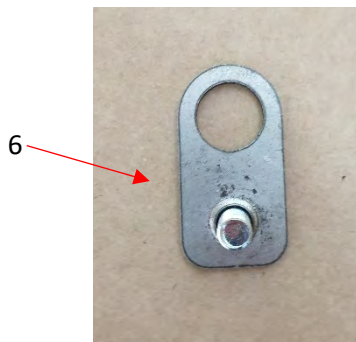
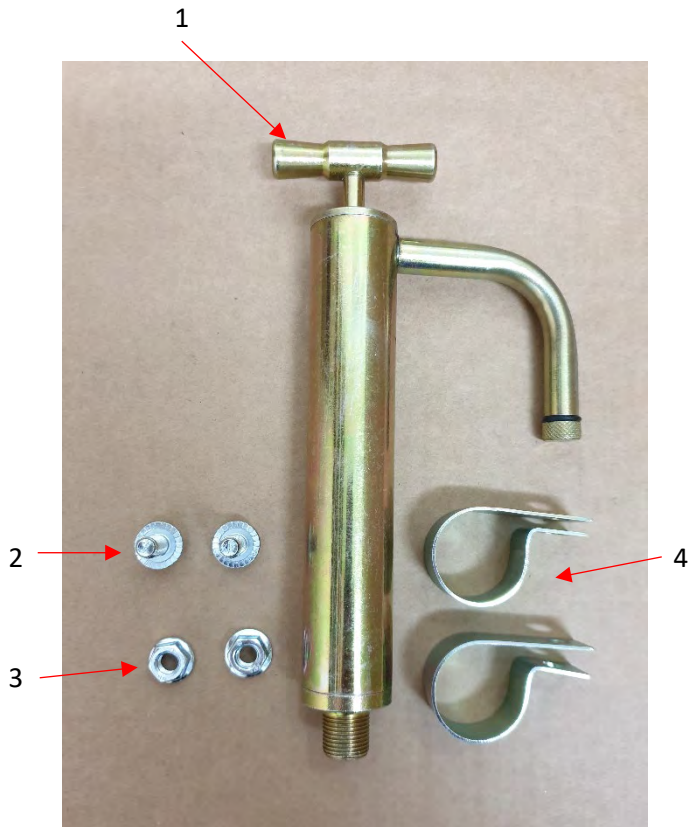


Ref No	Part Number	Description	Quantity
1	KYE575336411	Extended dipstick	1
2	EP710510	Dipstick tube	1
3	EP710518	P clip M12	1
4	FTGM5X20HTEX	M5 x 20mm HT Hex	1
5	FTGM5WASHER	M5 washer	2
6	FTGM5LOCKNUT	M5 nylock nut	1
Note			

Kit Code: 763001

Description: Sump pump and pipe kit

Used on CL38, CL42, CL52, CL60 and CL70T

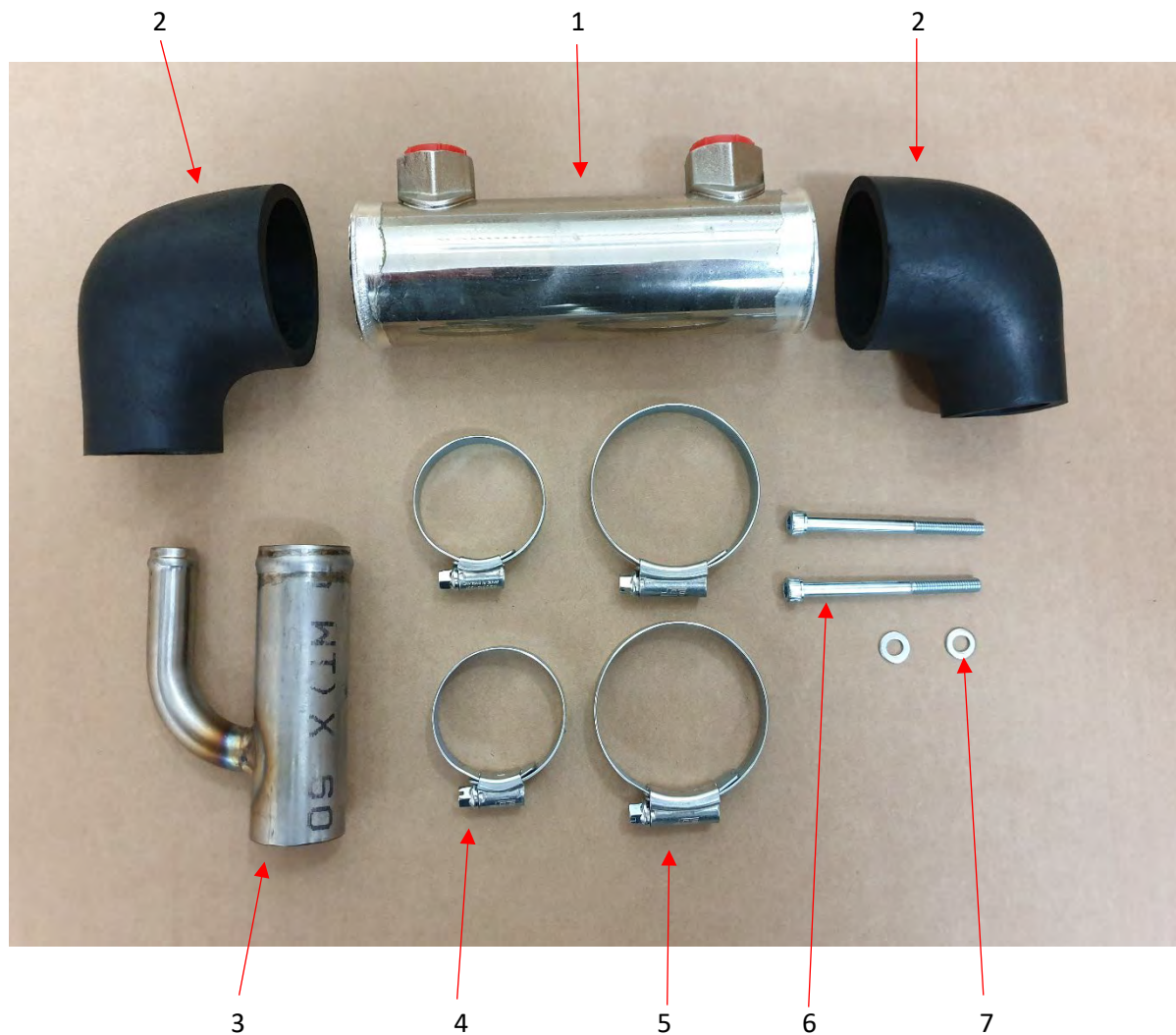


Ref No	Part Number	Description	Quantity
1	EP710089	Sump pump	1
2	FTGM8X20FLANGE	M8 x 20mm serrated flange bolt	2
3	FTGM8FLANGENUT	M8 serrated flange nut	2
4	EP710058	P clip – sump pump	2
5	EP710508	Oil drain hose kit	1
6	EP710516	Support plate – oil drain	1
Note	Break down of oil drain hose kit		
	EP710090	Ball Valve / Tap	1
	EP710534	Adaptor – 3/8 BSP	1
	EP710098	Hose – 910 long	1

Kit Code: 763002

Description: Oil cooler & Pipework

Used on CL38, CL42, CL52



Ref No	Part Number	Description	Quantity
1	EP710520	Oil cooler – single pass	1
2	EP710533	End cap-90 deg	2
3	EP410510	Inlet pipe assy	1
4	FTGHOSECLIPS45-35	32 - 45 Hose clips	2
5	FTGHOSECLIPS60-45	45 - 60 Hose clips	2
6	FTGM6X70CAPSCREW	M6 Cap screw x70 mm	2
7	FTGM6PWASHER	M6 Plain washer	2
Note			

Kit Code: 763002

Description: Oil cooler & Pipework

Used on CL38, CL42, CL52

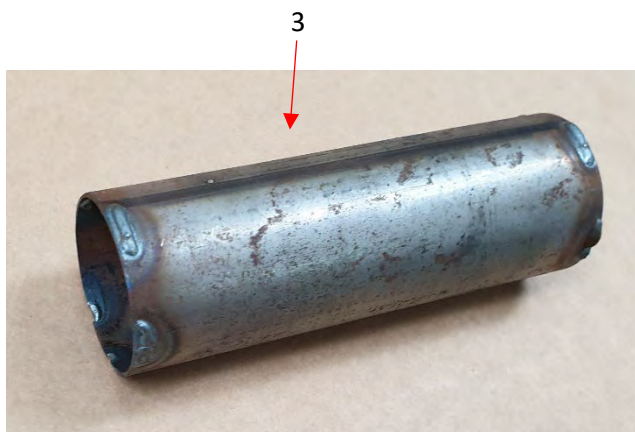
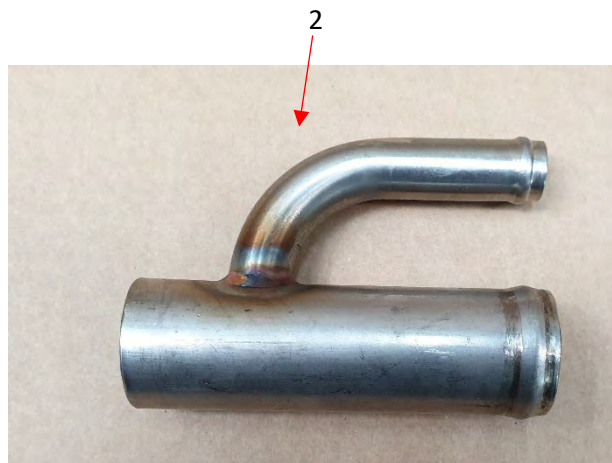
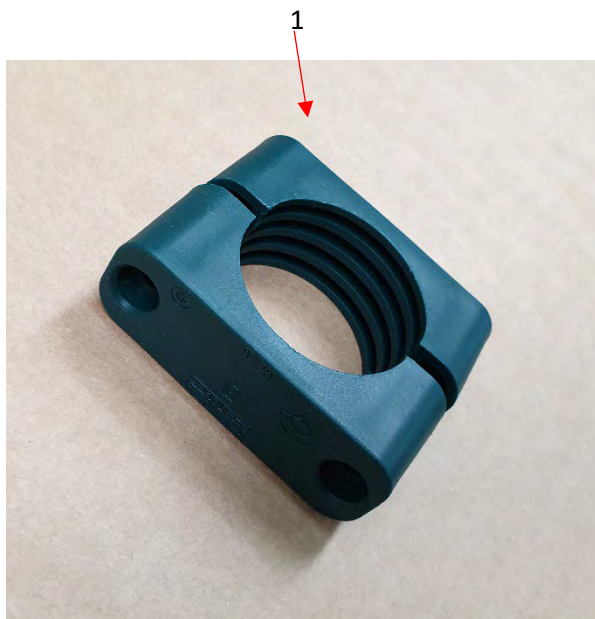


Ref No	Part Number	Description	Quantity
1	EP710514	Support plate	1
2	EP710512	Oil cooler hose kit – 4A	1
Note	Breakdown of oil cooler hose kit below		
	EP710019	Stauff clamp – 50.8 dia	1
	EP710526	Hose assembly	2
	EP710022	3/8"-1/4"BSP m-m adaptor with 1/4"BSP bonded washer	2
	EP710021	3/8"BSP m-m adaptor with 3/8" BSP bonded washer	2
	EP710513	18 mm Double hose clamp	1

Kit Code: 763003

Description: Dummy Oil cooler kit

Used on CL38

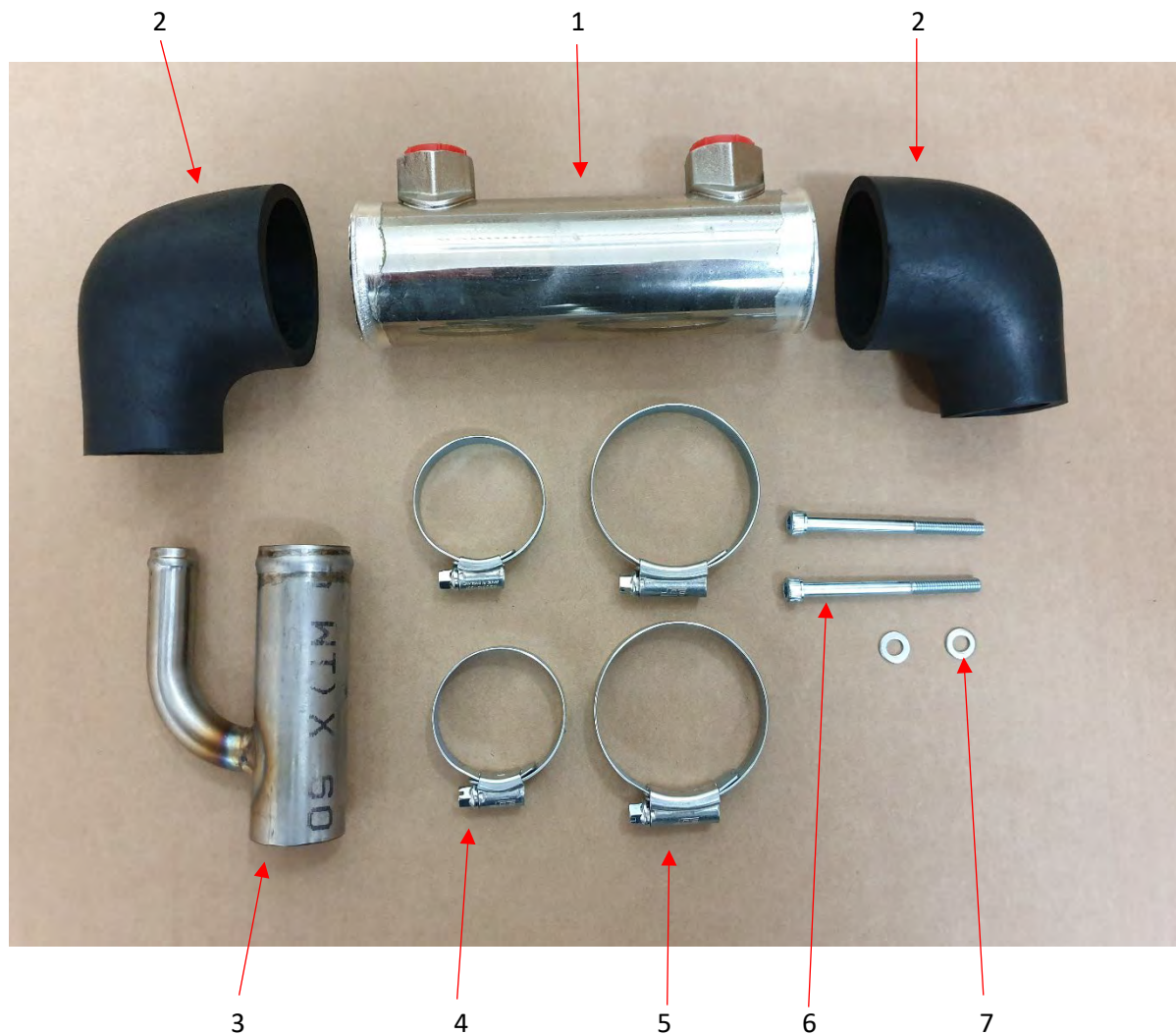


Ref No	Part Number	Description	Quantity
1	EP710019	Stauff clamp – 50.8 dia (Pair)	1
2	EP410510	Inlet pipe assy	1
3	EP410535	Water transfer tube	1
4	EP710533	End cap – 90 deg	2
Fixing for kit			
6	FTGHOSECLIP45-35	35 – 45 Hose clip	0.2
7	FTGHOSECLIP60-45	45 – 60 Hose clip	0.2
8	FTGM6X70CAPSCREW	M6 x 70mm Cap screw	2
9	FTGM6PWASHER	M6 Plain washer	2
Note			

Kit Code: 763007

Description: Oil cooler & Pipework

Used on CL60 & CL70T



Ref No	Part Number	Description	Quantity
1	EP710520	Oil cooler – single pass	1
2	EP710533	End cap-90 deg	2
3	EP410510	Inlet pipe assy	1
4	FTGHOSECLIPS45-35	32 - 45 Hose clips	2
5	FTGHOSECLIPS60-45	45 - 60 Hose clips	2
6	FTGM6X70CAPSCREW	M6 Cap screw x70 mm	2
7	FTGM6PWASHER	M6 Plain washer	2
Note			

Kit Code: 763007

Description: Oil cooler & Pipework

Used on CL60 & CL70T

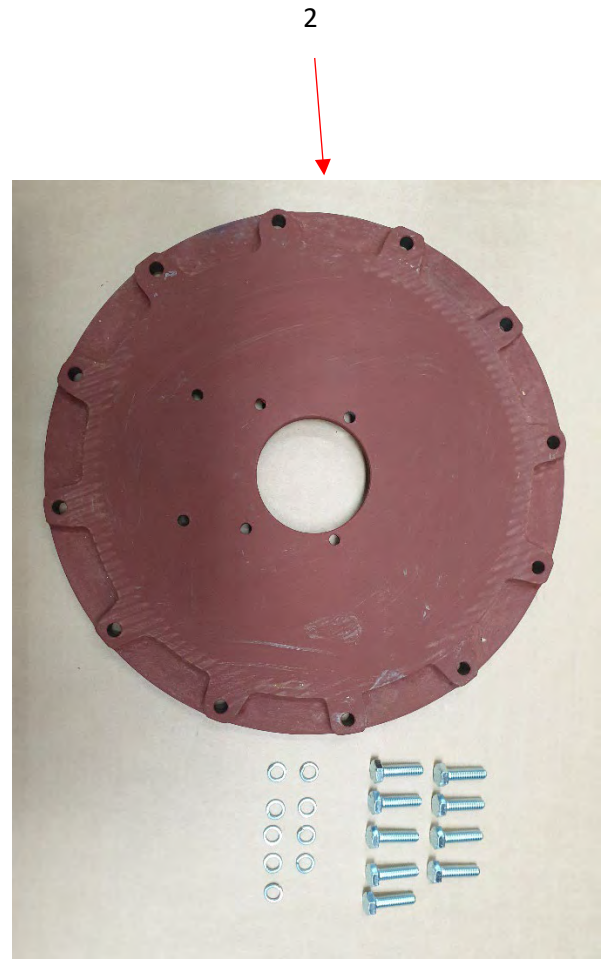
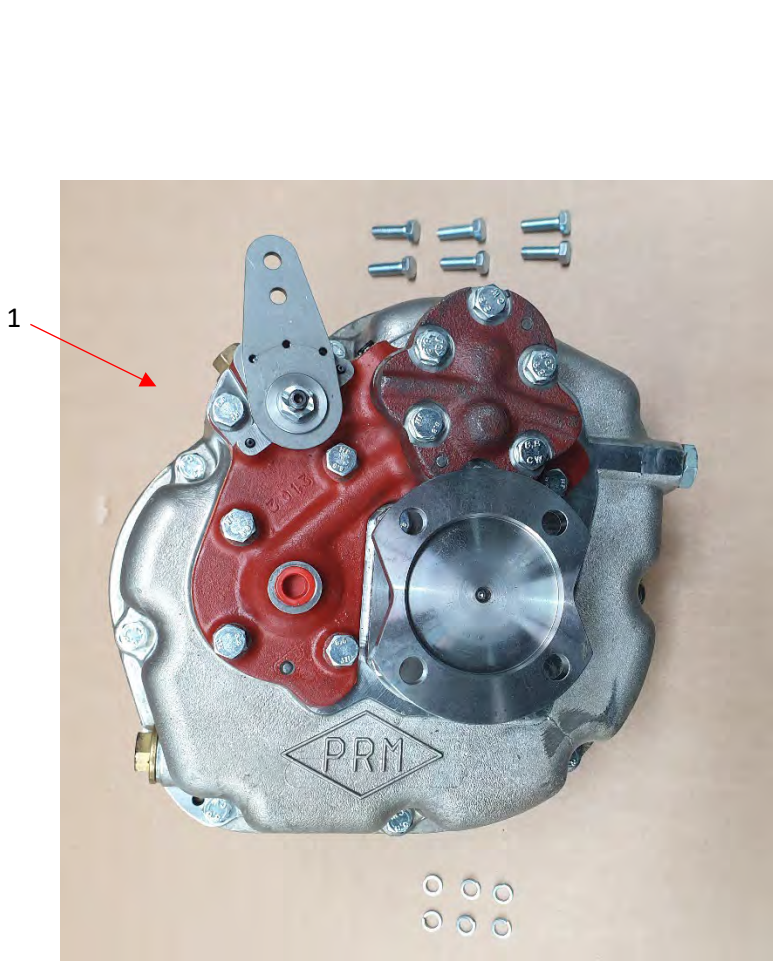


Ref No	Part Number	Description	Quantity
1	EP710514	Support plate	1
2	EP710512	Oil cooler hose kit – 4A	1
Note	Breakdown of oil cooler hose kit below		
	EP710019	Stauff clamp – 50.8 dia	1
	EP710526	Hose assembly	2
	EP710022	3/8"-1/4" BSP m-m adaptor with 1/4" BSP bonded washer	2
	EP710021	3/8" BSP m-m adaptor with 3/8" BSP bonded washer	2
	EP710513	18 mm Double hose clamp	1
3	EP410562	Superflex silicone hose x 16 Bore	1
Fixings	FTGHOSECLIPS35-25	25 – 35 Hose clips	2

Kit Code: 863004

Description: PRM150D2 G/box , drive plate & adaptor

Used on CL38, CL42, CL52 , CL60 & CL70T

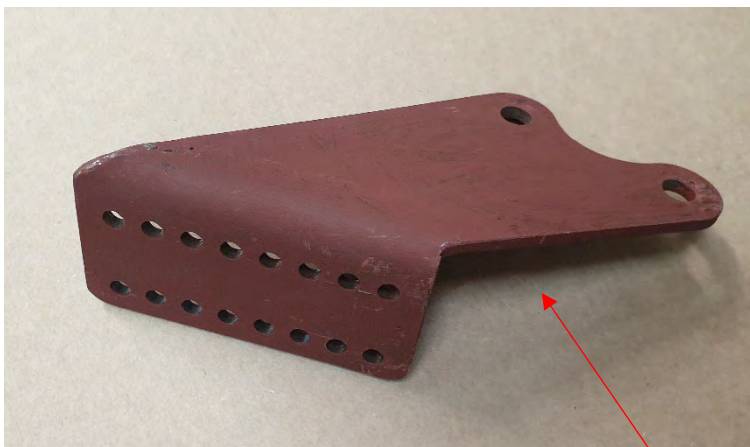
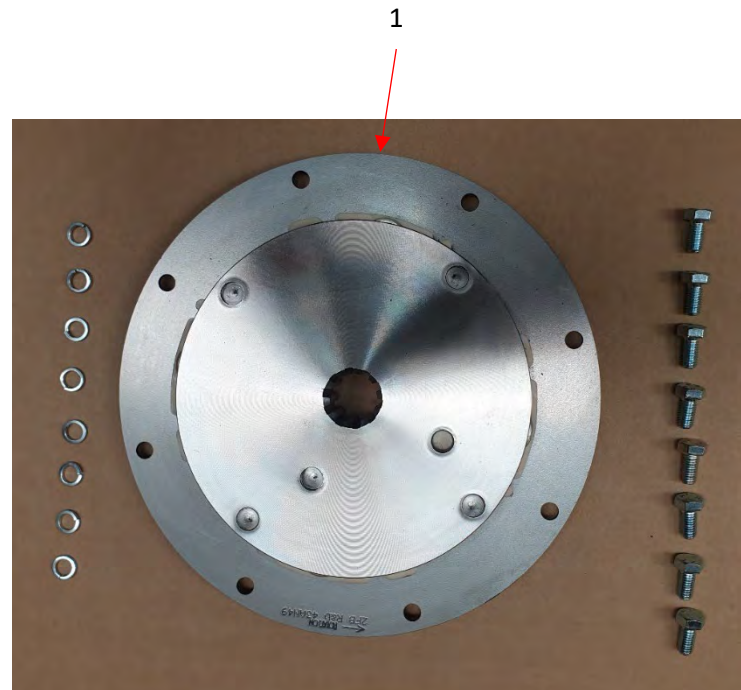


Ref No	Part Number	Description	Quantity
1	EP810021	PRM150D2 Gearbox	1
Fixings	FTGM8X25HTHEX	M8 x 25 HT Hex set	6
	FTGM8SWASHER	M8 Spring washer	6
2	EP810500	Adaptor plate SAE4 PRM 120/150	1
Fixings	FTGM10SWASHER	M10 Spring washer	9
	FTGM10X35HTHEX	M10 x 35 HT Hex set	9
Note			

Kit Code: 863004

Description: PRM150D2 G/box , drive plate & adaptor

Used on CL38, CL42, CL52 , CL60 & CL70T

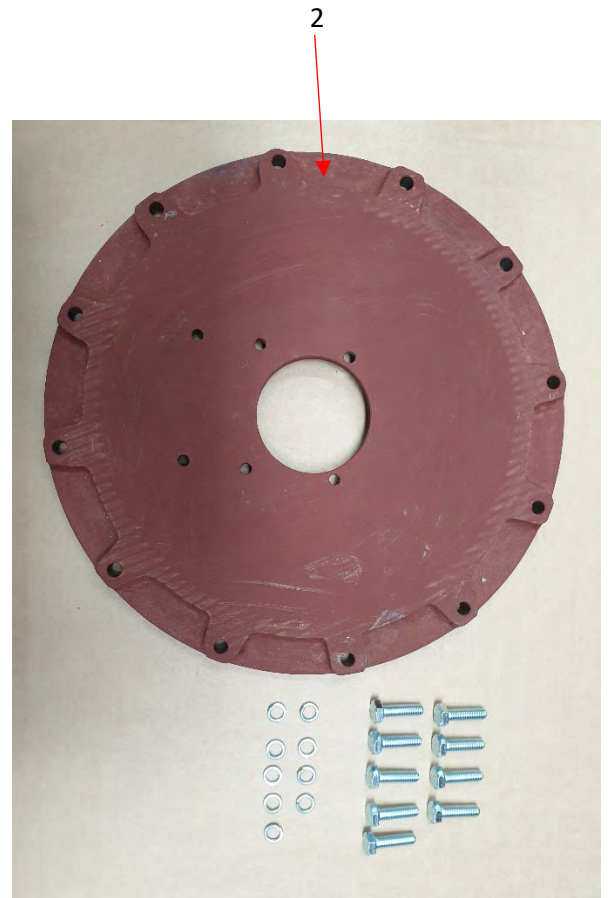
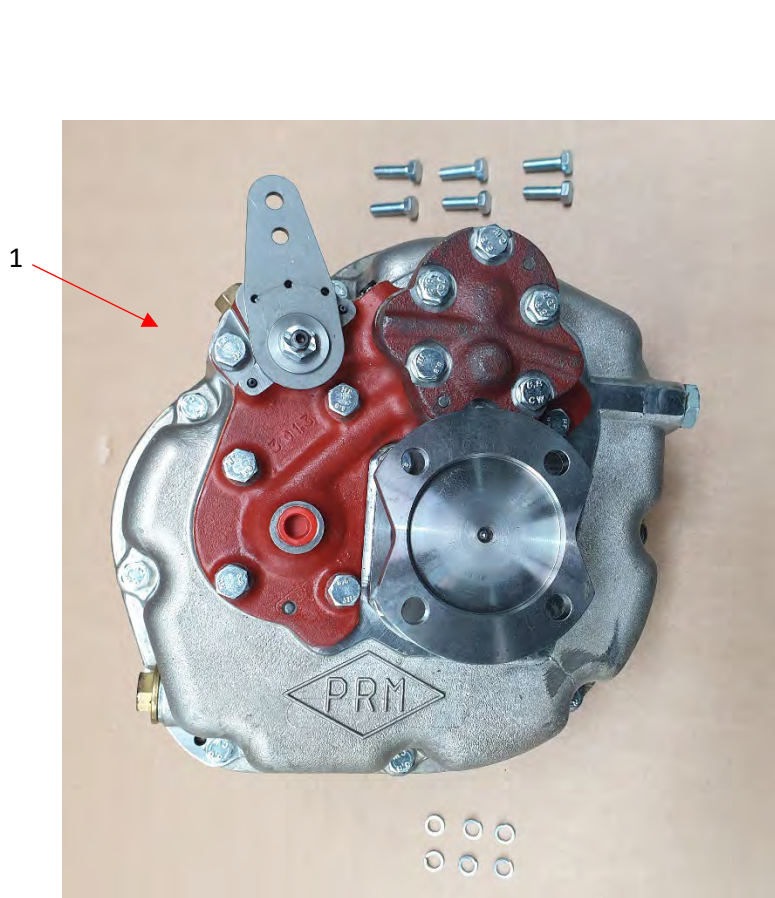


Ref No	Part Number	Description	Quantity
1	EP810088	Drive plate 7.5-inch PRM150	1
Fixings	FTGM8SWASHER	M8 Spring washer	8
	FTGM8X16HTHEX	M8 x 16 HT Hex set	8
2	EP310033	Cable anchor bracket PRM150	1
3	EP310085	Saddle clamp kit	1
4	EP310085	Ball joint	1

Kit Code: 863005

Description: PRM150D3 G/box , drive plate & adaptor

Used on CL38, CL42, CL52 , CL60 & CL70T

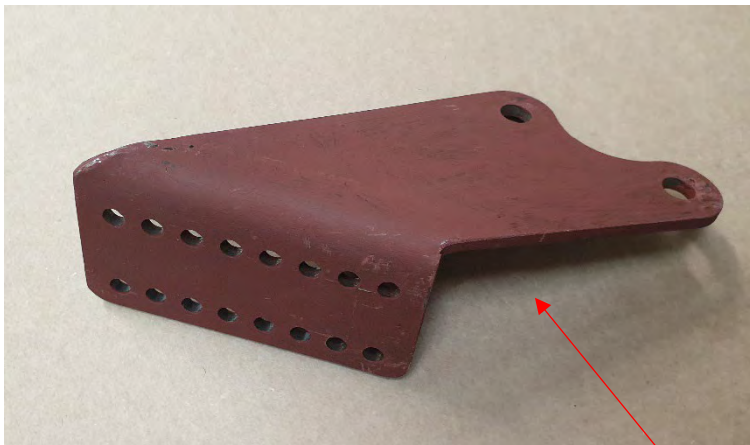
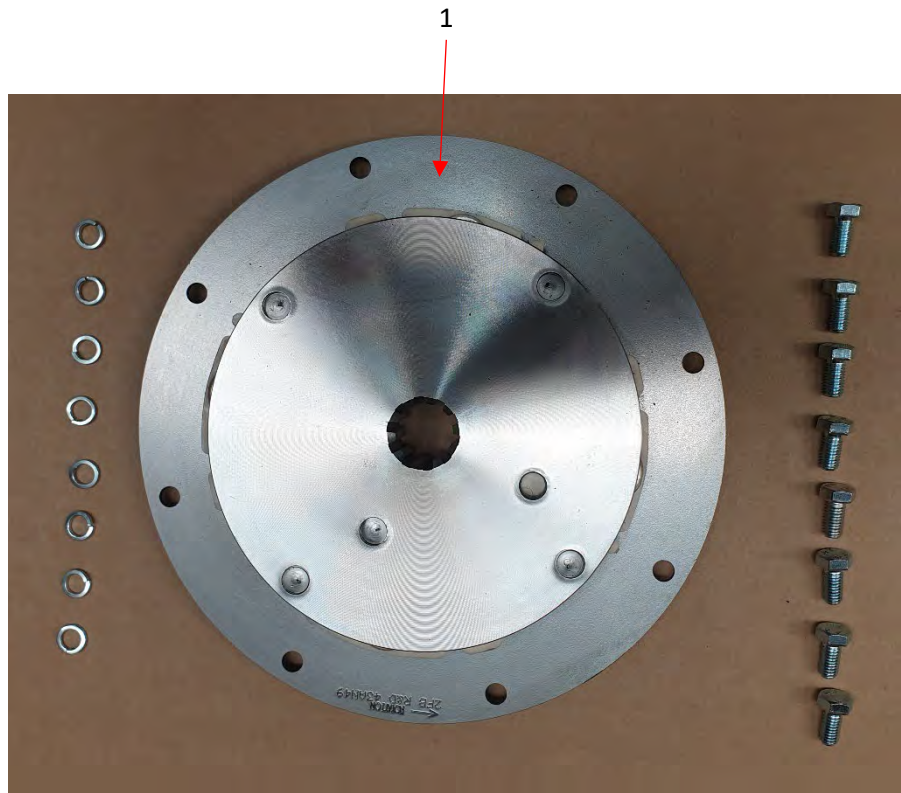


Ref No	Part Number	Description	Quantity
1	EP810022	PRM150D3 Gearbox	1
Fixings	FTGM8X25HTHEX	M8 x 25 HT Hex set	6
	FTGM8SWASHER	M8 Spring washer	6
2	EP810500	Adaptor plate SAE4 PRM 120/150	1
Fixings	FTGM10SWASHER	M10 Spring washer	9
	FTGM10X35HTHEX	M10 x 35 HT Hex set	9
Note			

Kit Code: 863005

Description: PRM150D3 G/box , drive plate & adaptor

Used on CL38, CL42, CL52 , CL60 & CL70T



Ref No	Part Number	Description	Quantity
1	EP810088	Drive plate 7.5-inch PRM150	1
Fixings	FTGM8SWASHER	M8 Spring washer	8
	FTGM8X16HTHEX	M8 x 16 HT Hex set	8
2	EP310033	Cable anchor bracket PRM150	1
3	EP310085	Saddle clamp kit	1
4	EP310085	Ball joint	1

Kit Code: 863019

Description: PRM280D2 Gearbox, drive plate & adaptor

Used on CL38, CL42, CL52, CL60 & CL70T



1



2



Ref No	Part Number	Description	Quantity
1	EP810606	PRM 280D2 gearbox	1
Fixings	FTGM10X25HTHEX	M10 x 25 HT Hex set	5
	FTGM10SWASHER	M10 Spring washer	5
2	EP810035	SAE4 Adaptor plate – 280	1
Fixings	FTGM10X35HTHEX	M10 x 35 HT Hex set	9
	FTGM10SWASHER	M10 Spring washer	9
Note			

Kit Code: 863019

Description: PRM280D2 Gearbox, drive plate & adaptor

Used on CL38, CL42, CL52, CL60 & CL70T



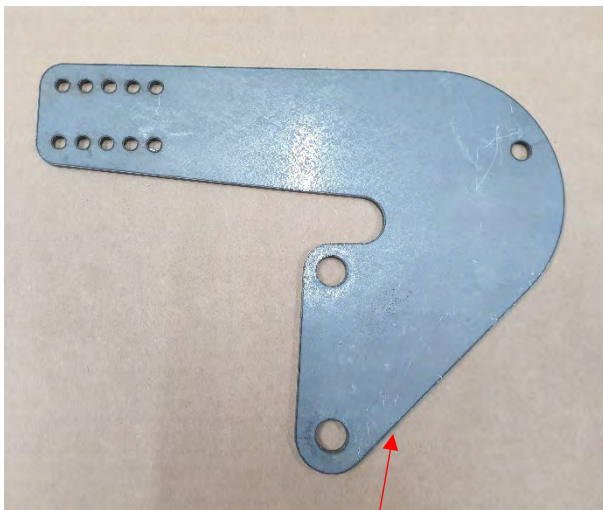
1



2



3



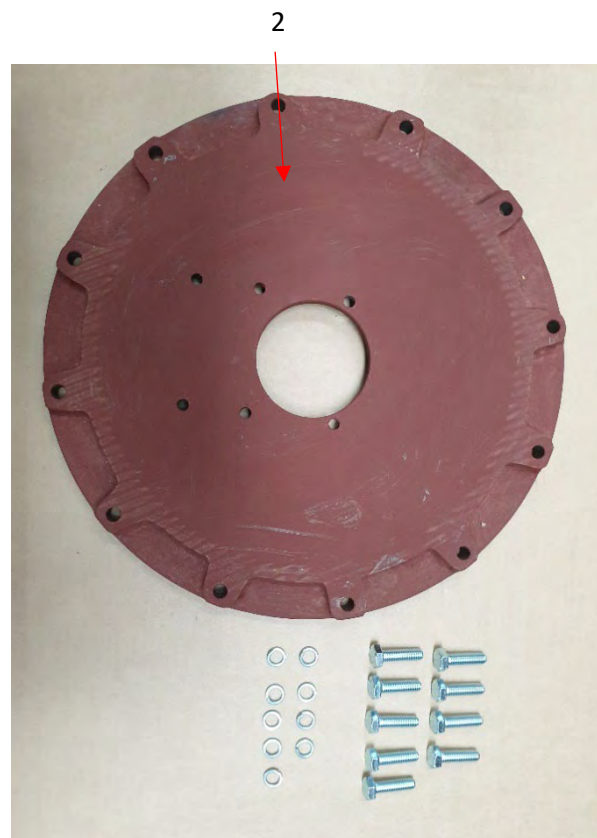
4

Ref No	Part Number	Description	Quantity
1	EP810504	Drive plate 7.5" PRM260 – CL4A	1
Fixings	FTGM8X16HTHEX	M8 x 16 HT Hex set	8
	FTGM8SWASHER	M8 Spring washer	8
2	EP310085	Ball joint	1
3	EP310084	Saddle clamp kit	1
4	EP310091	Cable anchor bracket – PRM260/280	1
Note			

Kit Code: 863023

Description: PRM125D2 G/box , drive plate & adaptor

Used on CL38

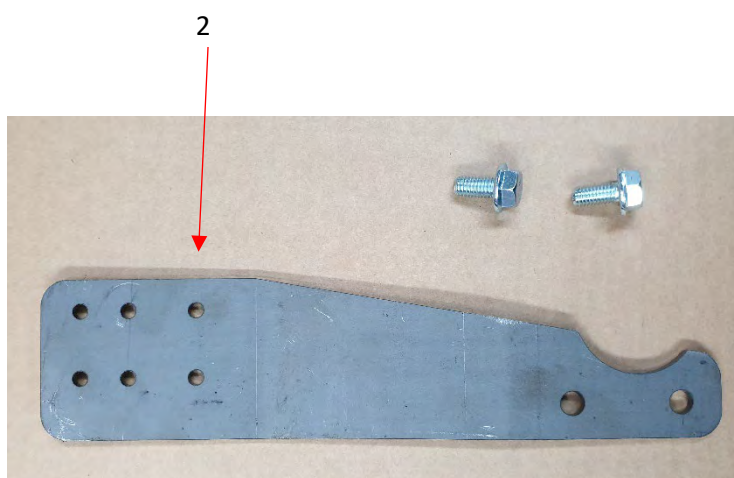
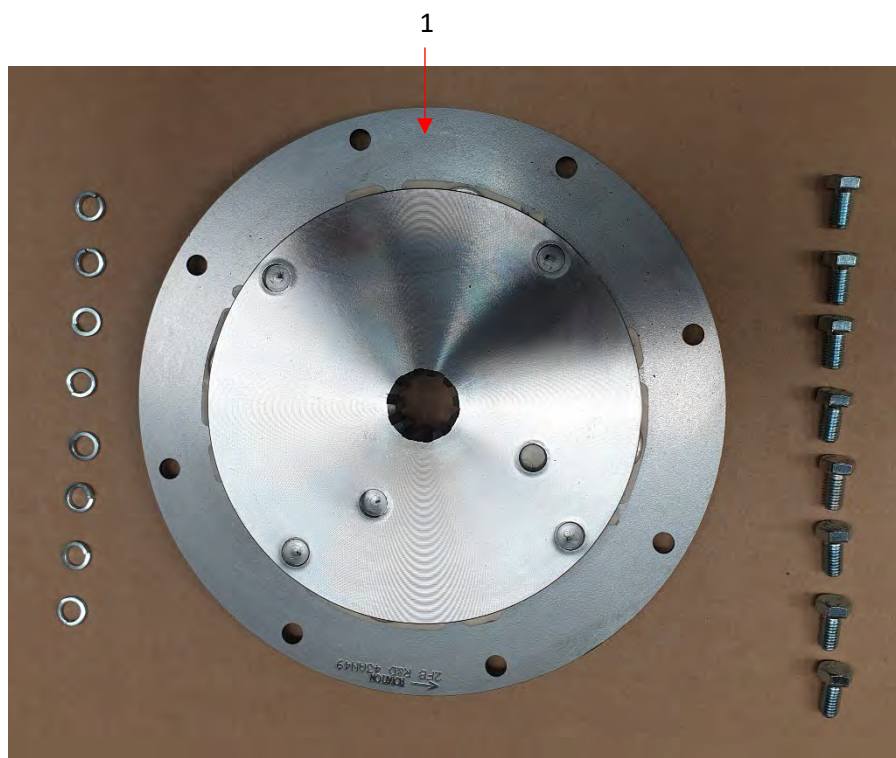


Ref No	Part Number	Description	Quantity
1	EP810617	PRM 125D2 marine gearbox	1
Fixings	FTGM8X25HTHEX	M8 x 25 HT Hex set	6
	FTGM8SWASHER	M8 Spring washer	6
2	EP810500	Adaptor plate SAE4 PRM 120/150	1
Fixings	FTGM10X35HTHEX	M10 x 35 HT Hex set	12
	FTGM10SWASHER	M10 Spring washer	12
Note			

Kit Code: 863023

Description: PRM125D2 G/box , drive plate & adaptor

Used on CL38, CL42, CL52



Ref No	Part Number	Description	Quantity
1	EP810039	Driveplate – 7.5 inch – PRM80 – 120	1
Fixing	FTGM8X16HTEX	M8 x 16 HT Hex set	8
	FTGM8SWASHER	M8 Spring washer	8
2	EP310529	Cab anchor bracket – PRM90 & PRM125	1
Fixing	FTGM8X16FLANGE	M8 x 16 Serrated flange	2
3	EP310084	Saddle clamp	1
4	EP310530	Cable pivot for PRM90/125	1

Kit Code: 963001

Description: Tensioner and slider for 75A alternator CL

Used on CL42, CL52, CL60 and CL70T



Ref No	Part Number	Description	Quantity
1	EP910644	Adjusting link – 75A alternator	1
2	EP910191	Slider – M8	1
3	FTGM8X80HTHEX	M8 x 80 HT Hex set	1
4	FTGM8SWASHER	M8 Spring washer	1
5	FTGM8PWASHER	M8 Plain washer	1
6	FTGM8FLANGENUR	M8 Serrated flange nut	1
Note			

Kit Code: 963005

Description: Decals

Used on CL38, CL42, CL52, CL60 and CL70T

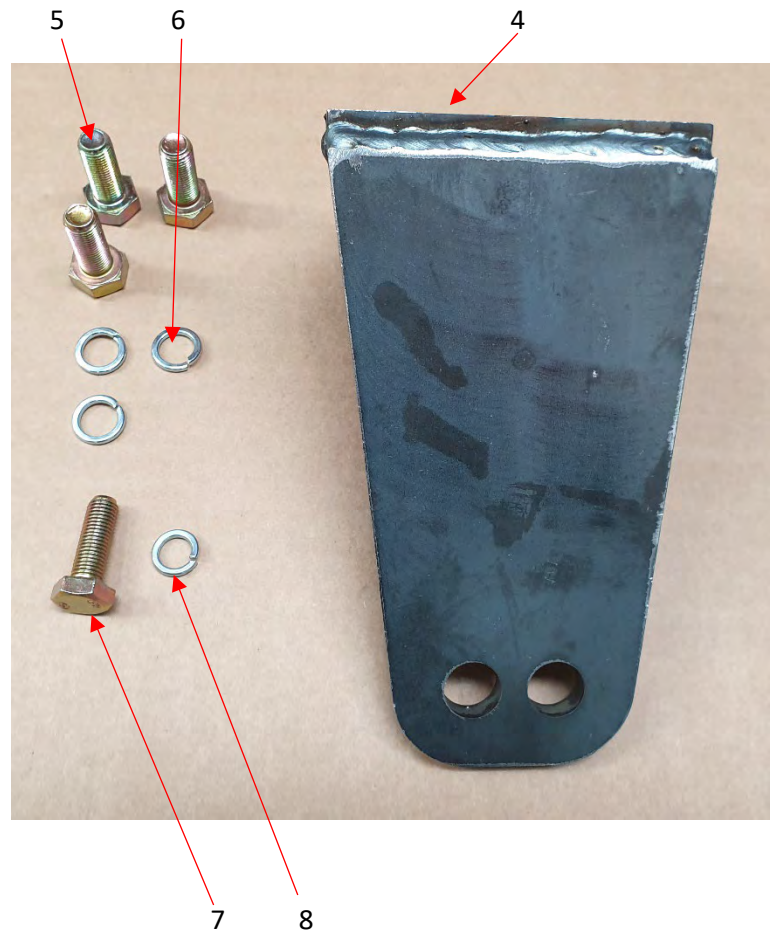
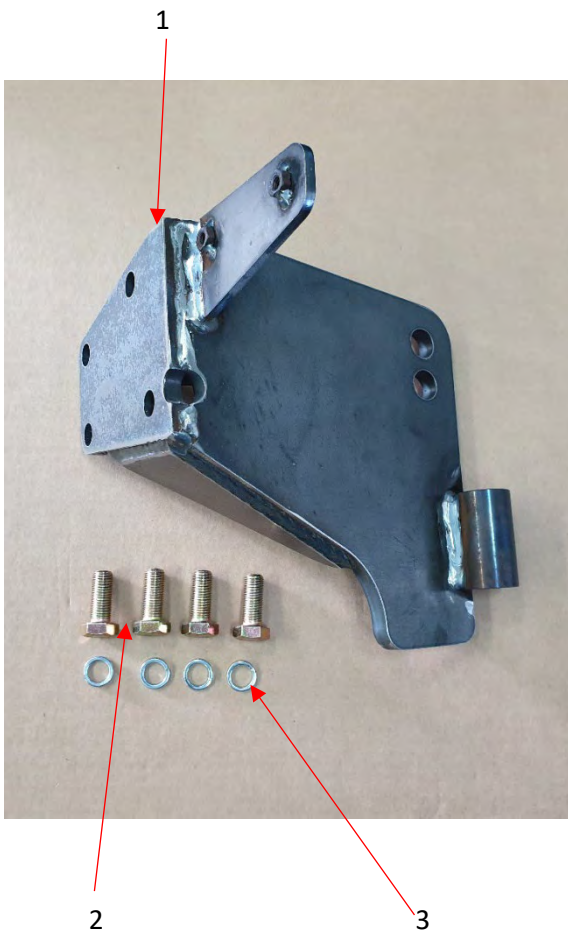


Ref No	Part Number	Description	Quantity
1	EP910541	Canaline operators handbook	1
2	EP910528	Decal set – Canaline	1
3	EP910256	Tag – aux alternator	1
4	EP910313	Oil spec tag	1
Note			

Kit Code: 963038

Description: 100A x 12v altr & front bearer kit

Used on CL38, CL42, CL52 and CL60

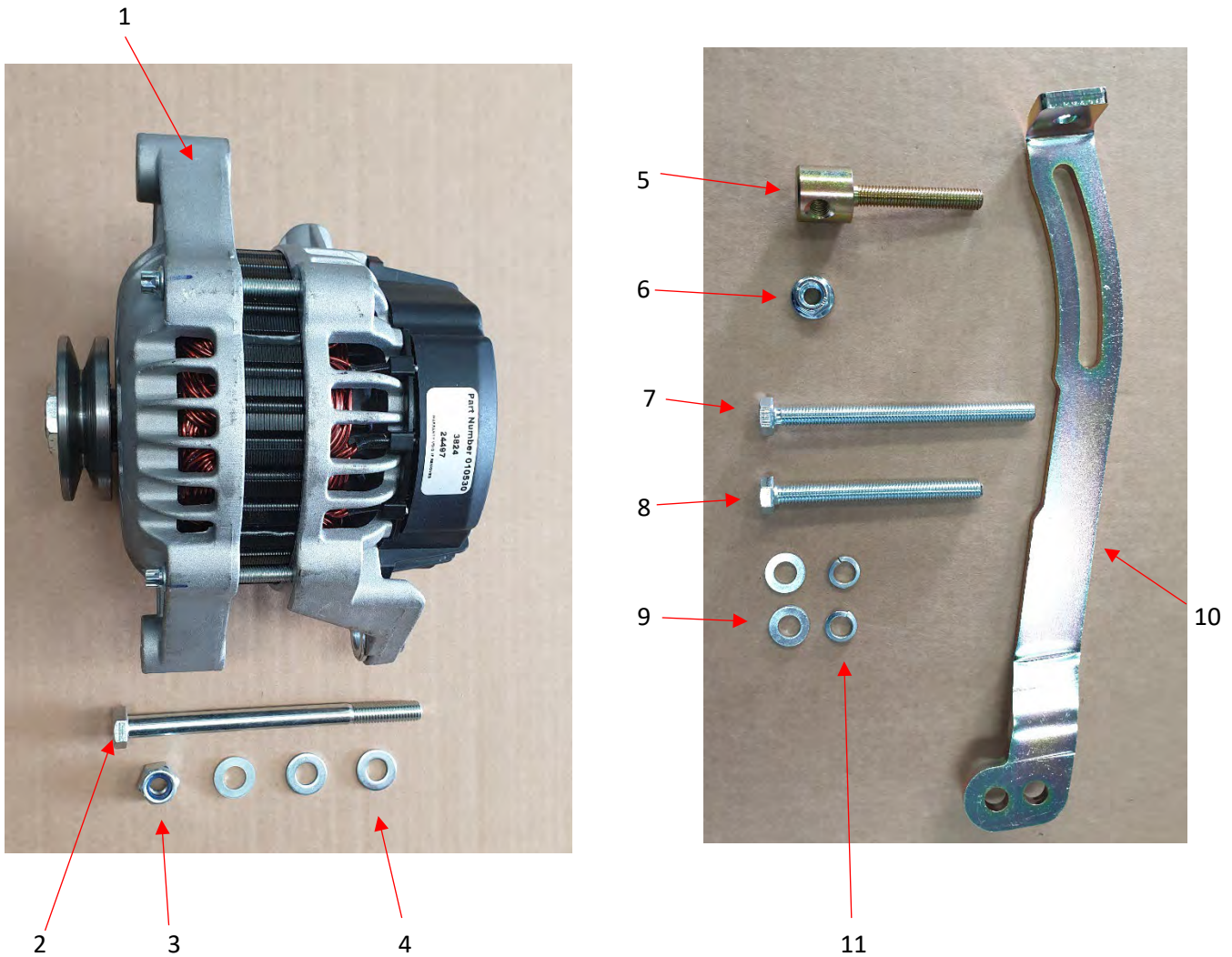


Ref No	Part Number	Description	Quantity
1	EP210543	Front bearer LH 100A	1
2	FTGM12X1.25X30F	M12 x 1.25 x30 HT Hex set	4
3	FTGM12SWASHER	M12 Spring washer	4
4	EP210537	Front bearer RH basic	1
5	FTGM12X1.25X30F	M12 x 1.25 x 30 HT Hex set	3
6	FTGM12SWASHER	M12 Spring washer	3
7	FTGM10X1.25X30F	M10 x 1.25 x30 HT Hex set	1
8	FTGM10SWASHER	M10 Spring washer	1
Note			

Kit Code: 963038

Description: 100A x 12v altr & front bearer kit

Used on CL38, CL42, CL52 and CL60

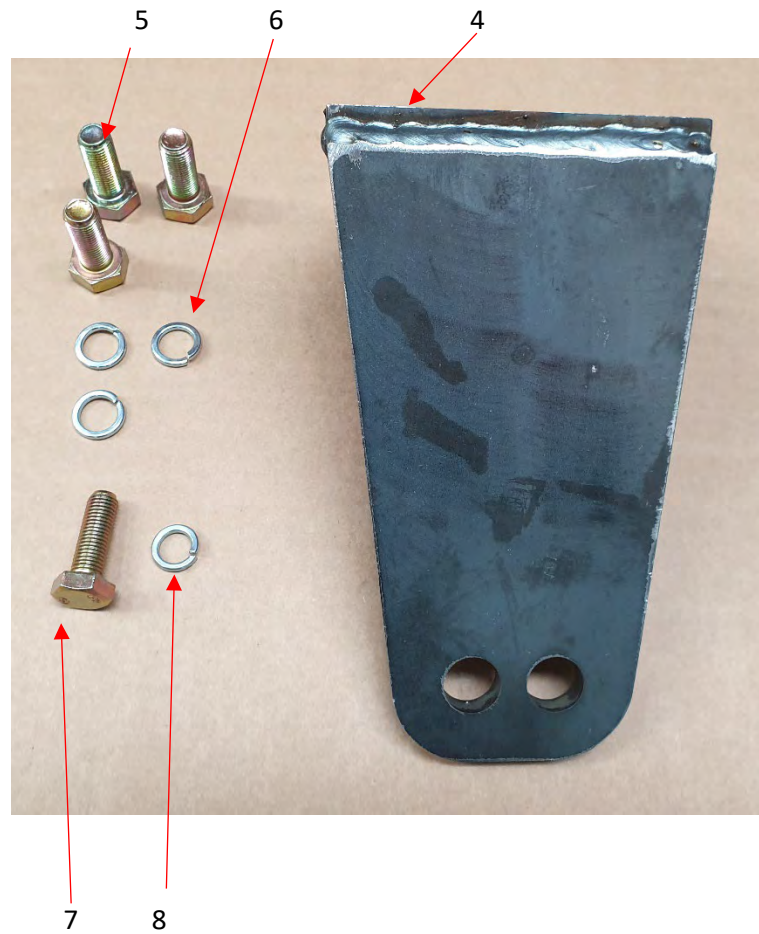
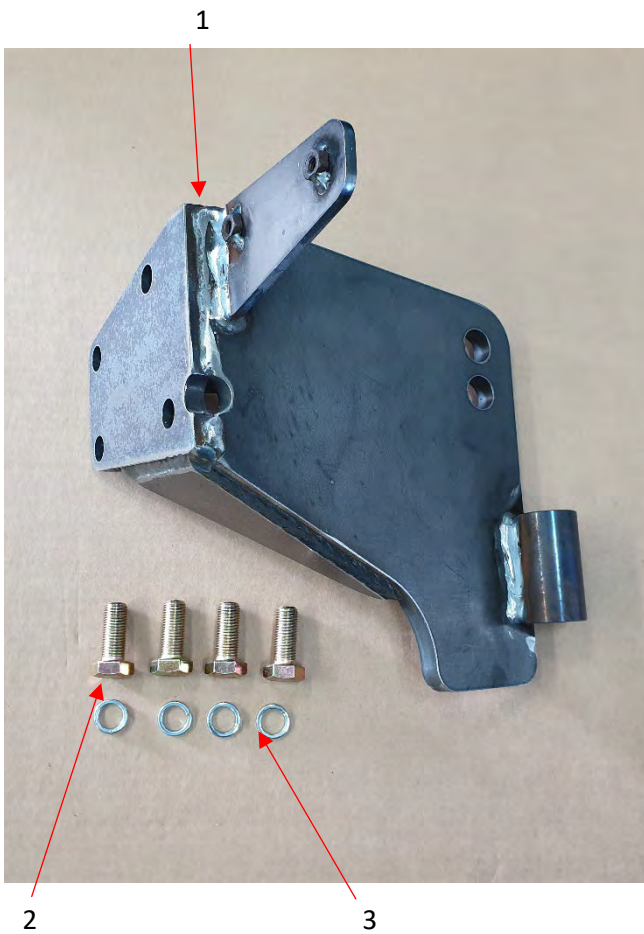


Ref No	Part Number	Description	Quantity
1	EP910655	100A alt, with single v pulley	1
2	FTGM10X140HTHEX	M10 x 140 HT Hex bolt	1
3	FTGM10LOCKNUT	M10 Lock nut	1
4	FTGM10PWASHER	M10 Plain washer	3
5	EP910692	Slider 70 mm long	1
6	FTGM8FLANGENUT	M8 Serrated flange nut	1
7	FTGM8X100HTHEX	M8 x100 HT Hex set	1
8	FTGM8X80HTHEX	M8 x 80 HT Hex set	1
9	FTGM8PWASHER	M8 Plain washer	2
10	FTGM8SWASHER	M8 Spring washer	2
11	EP910526	Adjusting link 110A	1
N/S	EP810975	Belt Aux 100 Amp	1
Note			

Kit Code: 963050

Description: 110A x 12v altr & front bearer kit

Used on CL38, CL42, CL52 and CL60

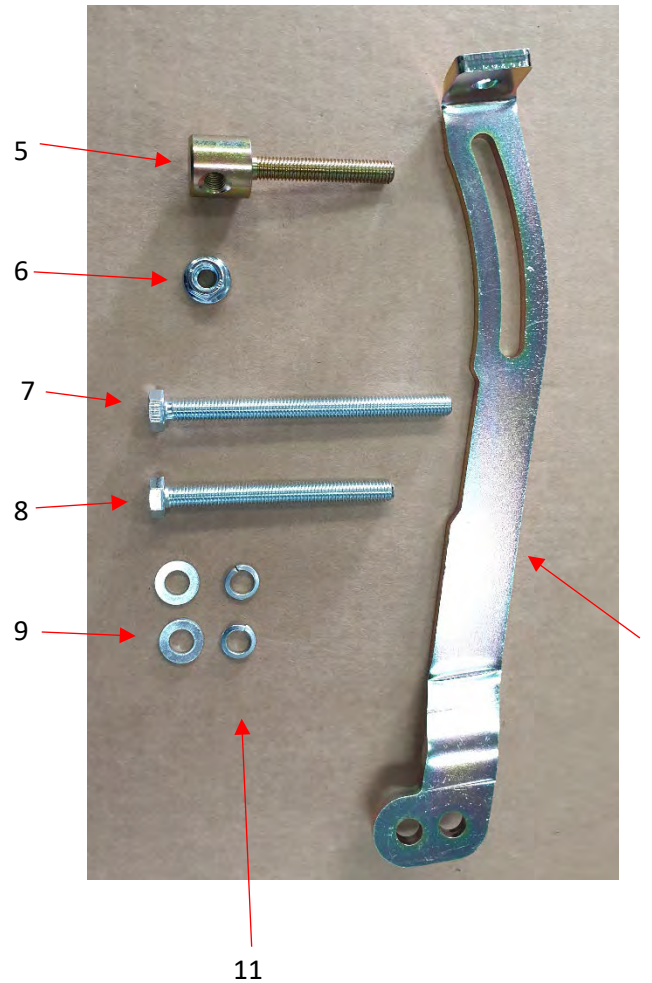


Ref No	Part Number	Description	Quantity
1	EP210670	Front bearer LH 110A	1
2	FTGM12X1.25X30F	M12 x 1.25 x30 HT Hex set	4
3	FTGM12SWASHER	M12 Spring washer	4
4	EP210537	Front bearer RH basic	1
5	FTGM12X1.25X30F	M12 x 1.25 x 30 HT Hex set	3
6	FTGM12SWASHER	M12 Spring washer	3
7	FTGM10X1.25X30F	M10 x 1.25 x30 HT Hex set	1
8	FTGM10SWASHER	M10 Spring washer	1
Note			

Kit Code: 963050

Description: 110A x 12v altr & front bearer kit

Used on CL38, CL42, CL52 and CL60

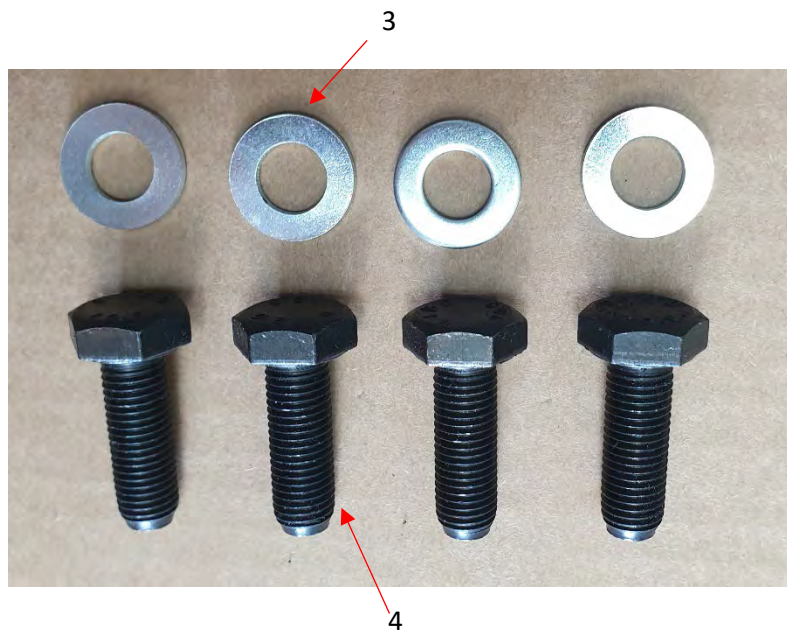
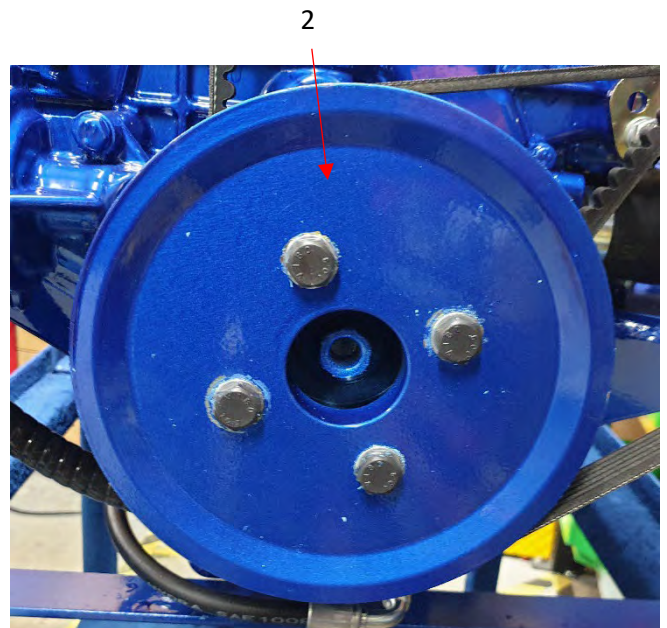


Ref No	Part Number	Description	Quantity
1	EP910655	100A alt, with single v pulley	1
2	FTGM10X140HTHEX	M10 x 140 HT Hex bolt	1
3	FTGM10LOCKNUT	M10 Lock nut	1
4	FTGM10PWASHER	M10 Plain washer	3
5	EP910692	Slider 70 mm long	1
6	FTGM8FLANGENUT	M8 Serrated flange nut	1
7	FTGM8X100HTHEX	M8 x100 HT Hex set	1
8	FTGM8X80HTHEX	M8 x 80 HT Hex set	1
9	FTGM8PWASHER	M8 Plain washer	2
10	FTGM8SWASHER	M8 Spring washer	2
11	EP910526	Adjusting link 110A	1
Note			

Kit Code: 963050

Description: 110A x 12v Altr & front bearer kit

Used on CL38, CL42, CL52 and CL60

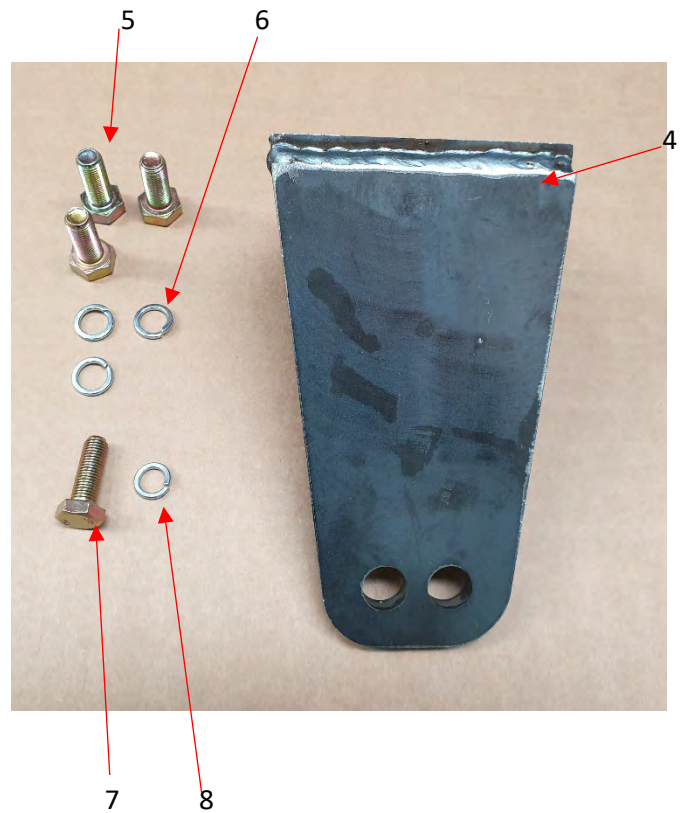
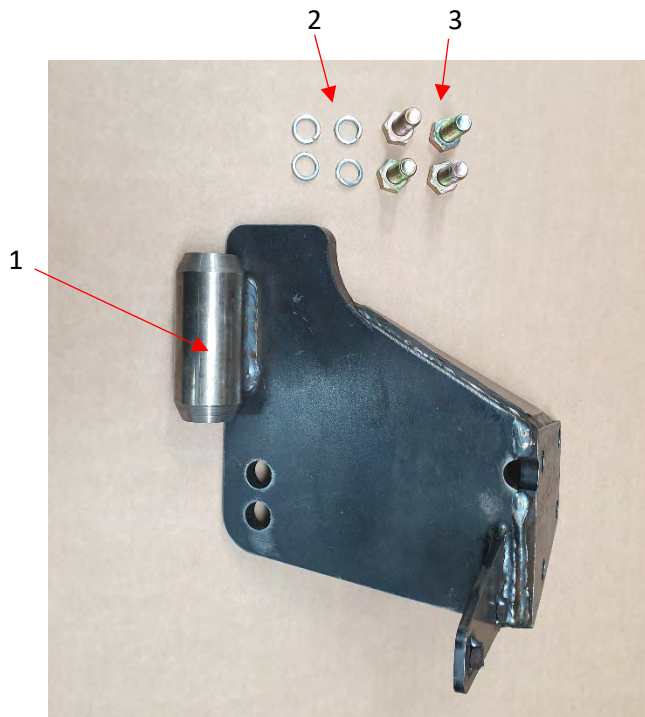


Ref No	Part Number	Description	Quantity
1	EP810624	PK pulley - Alternator	1
2	EP910645	Crank pulley 6PK direct fit type	1
3	FTGM10X1.25X30P	M10 x 1.25 x 30 HT Hex set (10.9)	4
4	FTGM10PWASHER	M10 Plain washer	4
N/S	EP811065	Belt 110A Alt aux 6PK	1

Kit Code: 963051

Description: 175 x 12V Altr & front bearer

Used on CL38, CL42, CL52 and CL60

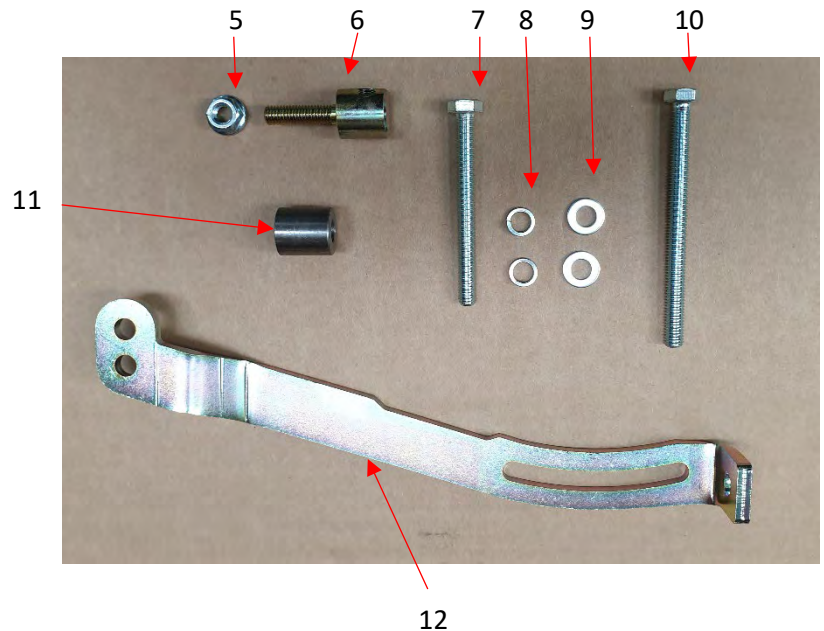
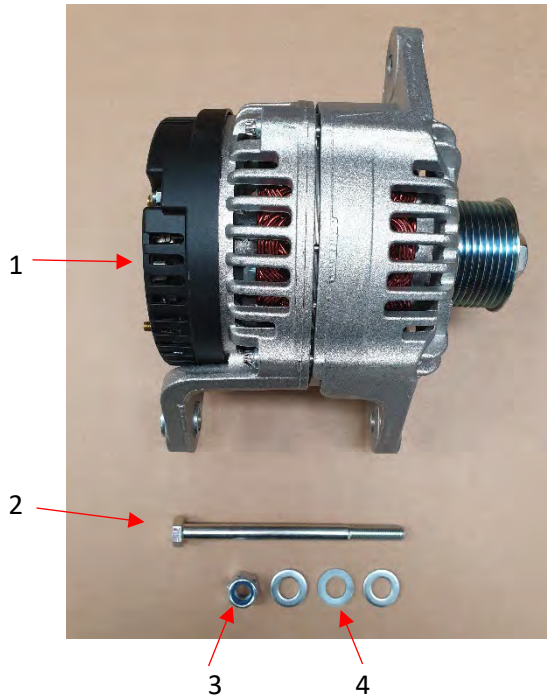


Ref No	Part Number	Description	Quantity
1	EP210671	Front bearer LH 175A alternator	1
2	FTGM12x1.25X30F	M12 x 1.25 x 30 HT Hex set	4
3	FTGM12SWASHER	M12 Spring washer	4
4	EP210537	Front bearer RH basic	1
5	FTGM12X1.25X30F	M12 x 1.25 x 30 HT Hex set	3
6	FTGM12SWASHER	M12 Spring washer	3
7	FTGM10X1.25X30F	M10 x 1.25 x 30 HT Hex set	1
8	FTGM10SWASHER	M10 Spring washer	1
Note			

Kit Code: 963051

Description: 175A x 12V Altr & front bearer kit

Used on CL38, CL42, CL52 and CL60



Ref No	Part Number	Description	Quantity
1	EP910687/EP910346	Alternator 12V x 175A	1
2	FTGM12X160HTHEX	M12 x160 HT Hex bolt	1
3	FTGM12PWASHER	M12 Plain washer	3
4	FTGM12LOCKNUT	M12 Lock nut	1
5	FTGM8FLANGENUT	M8 Serrated flange nut	1
6	EP910191	Slider – M8	1
7	FTGM8X80HTHEX	M8 x 80 HT Hex set	1
8	FTGM8SWASHER	M8 Spring washer	2
9	FTGM8PWASHER	M8 Plain washer	2
10	FTGM8X100HTHEX	M8 x 100 HT Hex set	1
11	EP910686	Spacer 20 x 9 x 22 long	1
12	EP910526	Adjusting link 110A	1
Note			

Kit Code: 963051

Description: 175A x 12V Altr & front bearer kit

Used on CL38, CL42, CL52 and CL60

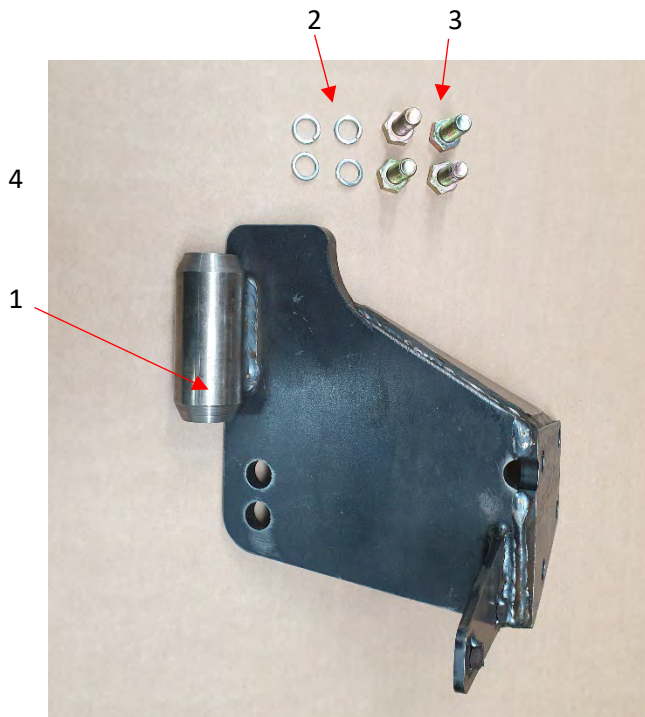


Ref No	Part Number	Description	Quantity
1	EP910645	Crank pulley 6PK direct fit	1
2	FTGM10X1.25X30P	M10 x 1.25 x30 HT Hex set (10.9)	4
3	FTGM10PWASHER	M10 Plain washer	4
4	EP811065	Belt 110A alt aux 6PK	1

Kit Code: 963057

Description: 175 x 12V Altr & front bearer CL70T

Used on CL70T

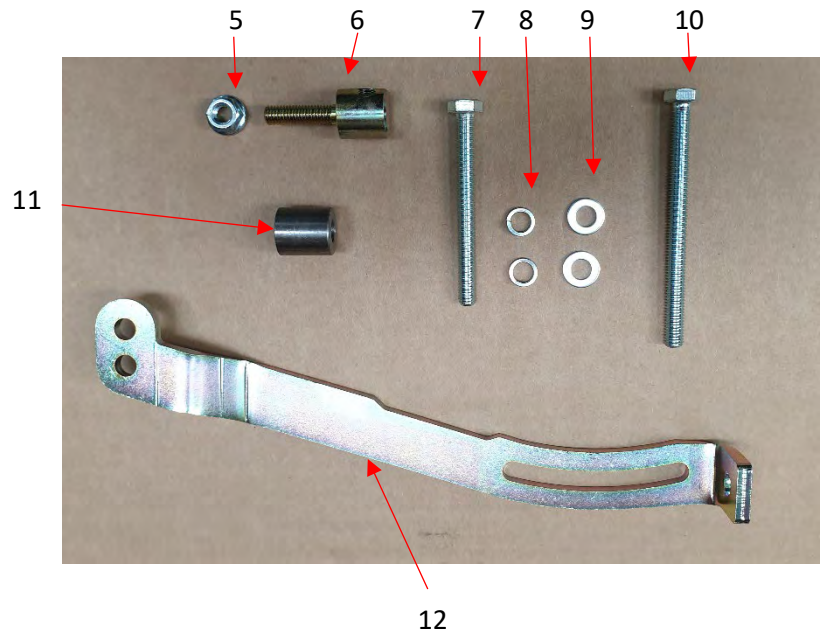
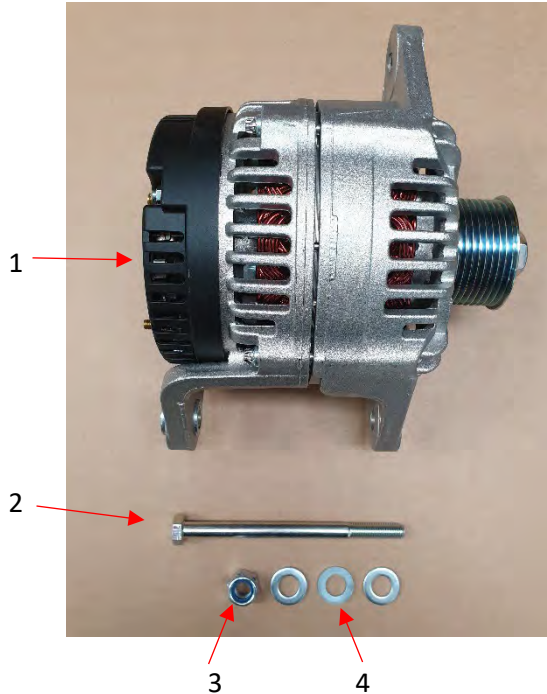


Ref No	Part Number	Description	Quantity
1	EP210669	Front bearer LH 175A alternator	1
2	FTGM12x1.25X30F	M12 x 1.25 x 30 HT Hex set	4
3	FTGM12SWASHER	M12 Spring washer	4
4	EP210537	Front bearer RH basic	1
5	FTGM12X1.25X30F	M12 x 1.25 x 30 HT Hex set	3
6	FTGM12SWASHER	M12 Spring washer	3
7	FTGM10X1.25X30F	M10 x 1.25 x 30 HT Hex set	1
8	FTGM10SWASHER	M10 Spring washer	1
Note			

Kit Code: 963057

Description: 175A x 12V Altr & front bearer kit CL70T

Used on CL70T



Ref No	Part Number	Description	Quantity
1	EP910687	Alternator 12V x 175A	1
2	FTGM12X160HTHEX	M12 x160 HT Hex bolt	1
3	FTGM12PWASHER	M12 Plain washer	3
4	FTGM12LOCKNUT	M12 Lock nut	1
5	FTGM8FLANGENUT	M8 Serrated flange nut	1
6	EP910191	Slider – M8	1
7	FTGM8X80HTHEX	M8 x 80 HT Hex set	1
8	FTGM8SWASHER	M8 Spring washer	2
9	FTGM8PWASHER	M8 Plain washer	2
10	FTGM8X100HTHEX	M8 x 100 HT Hex set	1
11	EP910686	Spacer 20 x 9 x 22 long	1
12	EP910526	Adjusting link 110A	1
Note			

Kit Code: 963057

Description: 175A x 12V Altr & front bearer kit CL70T

Used on CL70T



Ref No	Part Number	Description	Quantity
1	EP910645	Crank pulley 6PK direct fit	1
2	FTGM10X1.25X30P	M10 x 1.25 x30 HT Hex set (10.9)	4
3	FTGM10PWASHER	M10 Plain washer	4
4	EP811065	Belt 110A alt aux 6PK	1

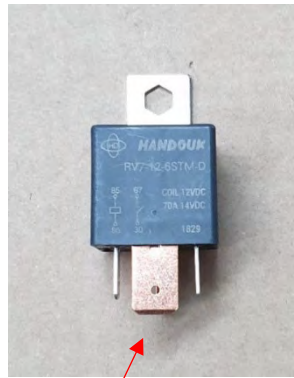
Kit Code: 963076

Description: Intermediate panel kit

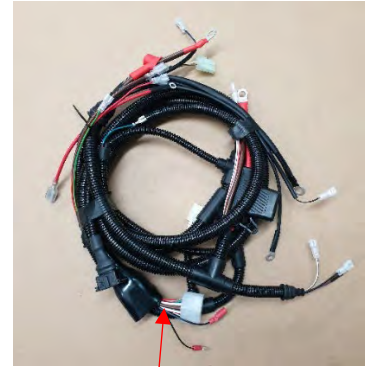
Used on CL38, CL42, CL52, CL60 and CL70T



1



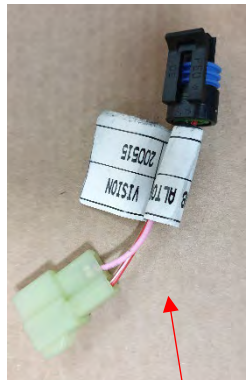
2



3



4



5



6



7

Ref No	Part Number	Description	Quantity
1	EP910506	Intermediate panel	1
2	KYT5535-69951	Relay	1
3	EP910731	Canaline loom with flexible trunking	1
4	EP910525	Canaline 2m extension loom	1
5	KYTE15-0025A	Alternator fly lead	1
6	EP910512	Temperature Switch	1
7	EP410524	Blanking plug M10 x1.0	1
Note	New loom and relay fitted from engine number EP.21.0123 To replace original loom before this number, use EP910731 and add relay, KYT553569951		

Spare Parts for intermediate panel

CANALINE

1



2



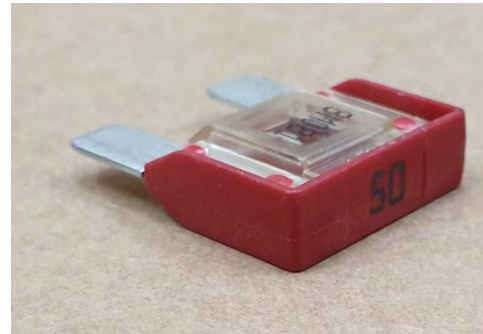
3



4



5



6



REF No	Part Number	Description	Quantity
1	EP910558	Tacho	1
2	EP910006	Key switch	1
3	EP910061	Key	1
4	EP910570	EPU led	1
5	EP910593	50 Amp maxi blade fuse	1
6	EP910733	Canaline intermediate panel decal	1

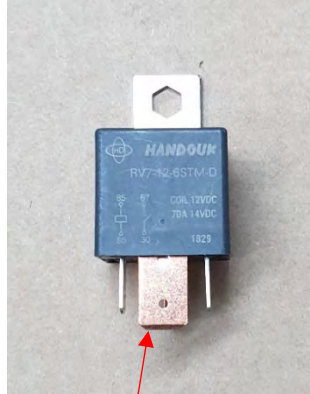
Kit Code: 963077

Description: Deluxe panel kit with new loom

Used on CL38, CL42, CL52, CL60 and CL70T



1



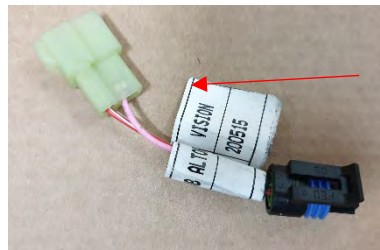
2



3



4



9



5

6

7

8

Ref No	Part Number	Description	Quantity
1	EP910507	Canaline Deluxe panel	1
2	KYT553569951	Relay	1
3	EP910731	Canaline engine loom with flexible trunking	1
4	EP910525	Canaline 2m extension loom	1
5	EP910041	Temperature sender	1
6	EP910512	Temperature Switch	1
7	EP910039	Switch/sender oil pressure	1
8	EP910040	Adaptor – Oil sender	1
9	KYTE150025A	Alternator Fly Lead	1
Note	New loom and relay fitted from engine number EP.21.0123 To replace original loom before this number, use EP910731 and add relay, KYT553569951		

Deluxe panel spare parts

CANALINE

1



2



3



4



5



6



7



8

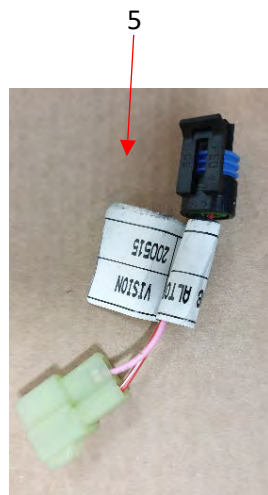
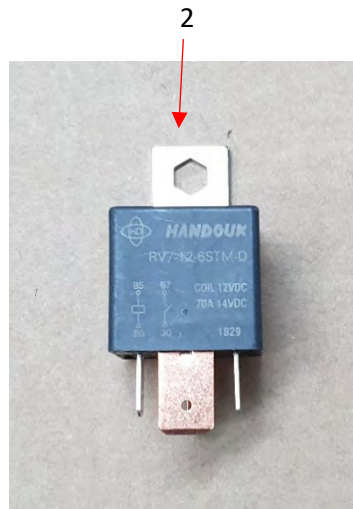


Ref No	Part Number	Description	Quantity
1	EP910606	Temperature gauge	1
2	EP910690	Oil pressure gauge	1
3	EP910558	Tacho	1
4	EP910006	Key switch	1
5	EP910061	Key	1
6	EP910570	EPU led	1
7	EP910691	Deluxe panel decal	1
8	EP910593	50 Amp maxi blade fuse	1

Kit Code: 963078

Description: Hire fleet panel kit

Used on CL38, CL42, CL52 and CL60



Ref No	Part Number	Description	Quantity
1	EP910559	Canaline hire fleet panel	1
2	KYT5535-69951	Relay	1
3	EP910731	Canaline engine loom with flexible trunking	1
4	EP910525	Canaline 2m extension loom	1
5	KYTE15-0025A	Alternator fly lead	1
6	EP910041	Temperature sender	1
7	EP910512	Temperature switch	1
N/S	EP910606	Temperature gauge	1
N/S	EP910783	Voltmeter	1
N/S	EP910139	Mechanical Hour recorder	1
Note	<p align="center">New loom and relay fitted from engine number EP.21.0123 To replace original loom before this number, use EP910731 and add relay, KYT553569951</p>		

Spare parts for hire fleet panel

1



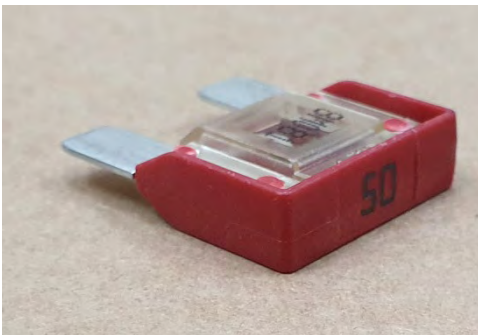
2



3



4



5



Ref No	Part Number	Description	Quantity
1	EP910606	Temperature gauge	1
2	EP910006	Key switch	1
3	EP910061	Key	1
4	EP910593	50 Amp maxi blade fuse	1
5	EP910570	EPU led	1